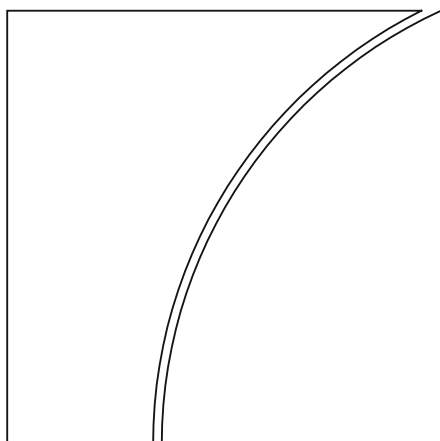




BANK FOR INTERNATIONAL SETTLEMENTS



BIS Working Papers No 732

The global factor in neutral
policy rates: Some
implications for exchange
rates, monetary policy, and
policy coordination

by Richard Clarida

Monetary and Economic Department

July 2018

JEL classification: E4, E5, F3, F31

Keywords: monetary policy, policy coordination,
exchange rates, r^*

BIS Working Papers are written by members of the Monetary and Economic Department of the Bank for International Settlements, and from time to time by other economists, and are published by the Bank. The papers are on subjects of topical interest and are technical in character. The views expressed in them are those of their authors and not necessarily the views of the BIS.

This publication is available on the BIS website (www.bis.org).

© *Bank for International Settlements 2018. All rights reserved. Brief excerpts may be reproduced or translated provided the source is stated.*

ISSN 1020-0959 (print)
ISSN 1682-7678 (online)

Foreword

The 16th BIS Annual Conference took place in Lucerne, Switzerland, on 23 June 2017. The event brought together a distinguished group of central bank Governors, leading academics and former public officials to exchange views on the topic “Long for long or turning point?”. The papers presented at the conference and the discussants’ comments are released as *BIS Working Papers*.

BIS Papers no 98 contains the opening address by Jaime Caruana (Former General Manager, BIS) and remarks by Alan Blinder (Princeton University) and Philip Lowe (Reserve Bank of Australia).

**The Global Factor in Neutral Policy Rates:
Some Implications for Exchange Rates, Monetary Policy, and Policy Coordination**

Richard Clarida*

Lowell Harriss Professor of Economics and International Affairs, Columbia University
Global Strategic Advisor, PIMCO
Research Associate, NBER.

Abstract

This paper highlights some of the theoretical and practical implications for monetary policy and exchange rates that derive specifically from the presence of a global general equilibrium factor embedded in neutral real policy rates in open economies. Using a standard two country DSGE model, we derive a structural decomposition in which the nominal exchange rate is a function of the expected present value of future neutral real interest rate differentials plus a business cycle factor and a PPP factor. Country specific “ r^* ” shocks in general require optimal monetary policy to pass these through to the policy rate, but such shocks will also have exchange rate implications, with an expected decline in the path of the real neutral policy rate reflected in a depreciation of the nominal exchange rate. We document a novel empirical regularity between the equilibrium error in the VECM representation of the empirical Holston Laubach Williams (2017) four country r^* model and the value of the nominal trade weighted dollar. In fact, the correlation between the dollar and the 12 quarter lag of the HLW equilibrium error is estimated to be 0.7. Global shocks to r^* under optimal policy require no exchange rate adjustment because passing through r^* shocks to policy rates ‘does all the work’ of maintaining global equilibrium. We also study a richer model with international spill overs so that in theory there can be gains to international policy cooperation. In this richer model we obtain a similar decomposition for the nominal exchange rate, but with the added feature that r^* in each country is a function global productivity and business cycle factors even if these factors are themselves independent across countries. We argue that in practice, there could well be significant costs to central bank communication and credibility under a regime formal policy cooperation, but that gains to policy coordination could be substantial given that $r^{*'}s$ are unobserved but are correlated across countries.

*This paper was prepared for the Annual BIS Research Conference held June 23rd, 2017 in Lucerne, Switzerland and has since been published in June 2017 as NBER working paper w23562. The author would like to thank Jordi Gali for sharing his insights on this and related topics.

I. Introduction

Over the past 25 years, best practice monetary policy has been implemented with reference - if not with mechanical adherence - to interest rate feedback rules that include as inputs estimates of both potential output as well as the real policy rate - often referred to the "neutral" real policy rate and denoted as r^* - consistent with potential output and price stability as defined by the central bank's inflation target. Before the global financial crisis and reflecting the justly deserved influence of Taylor (1993), it was common in policy simulations (Henderson and McKibbin (1993)) and in empirical work (Clarida, Gali, Gertler (1998;2000)) to make the simplifying assumption that r^* is constant. However, it has long been appreciated (Wicksell (1898) ; Friedman (1968)) that r^* can be time varying and in particular, the theoretical analysis of monetary policy rules in Woodford (2003) and Clarida , Gali, Gertler (1999;2002) - among many others - has emphasized that shocks to r^* should be reflected in policy rates set by central banks seeking to keep the economy as close as possible to the benchmark of a flexible price equilibrium. Since the global financial crisis , estimated and projected future declines in neutral real policy rates (Laubach and Williams (2003); Holston, Laubach, Williams (2017)) ; Hamilton , et. al. (2015)) relative to the pre-crisis experience have become an important consideration in the conduct of monetary policy and the communication of forward guidance at the Fed and some other major central banks (Yellen (2017); Haldane (2015)).

One obvious and significant implication of a persistent decline in the neutral real policy rate in any given country is that such a decline makes it more likely that a central bank will hit the effective - perhaps somewhat less than zero - lower bound for any given inflation target and distribution of shocks . While these lower - bound and choice-of -inflation- target topics are important (and have recently been

studied in the open economy context by Cook and Devereux (2013)), they are not the focus of this paper. Instead, the focus of this paper is on highlighting some of the theoretical and practical implications for monetary policy and foreign exchange rates that derive specifically from the presence of a global general equilibrium factor - predicted in theory and estimated in practice - embedded in neutral real policy rates in open economies. Empirically, as shown in a recent study by Ferrari, Kearns, and Schrimpf (2017) the exchange rate impact of monetary policy shocks has been growing significantly this appears to be related – and is certainly contemporaneous with – the observed decline in neutral policy rates (see also Gali (2017) for a model of forward guidance and exchange rates).

After reviewing in Section II some of the existing empirical evidence on the presence of a global factor in neutral policy rates, we present in Section III a simple two country model (based on Gali-Monacelli (2005) and Clarida (2014)) to help illustrate several points about how shocks to neutral policy rates might impact monetary policy and exchange rates. We show that in this model, the neutral real policy rate in each country will be a function of expected productivity growth in that country, so that if there is a common factor across countries in productivity growth, there will be a common factor in neutral policy rates. If countries are adjusting policy in response to common, global neutral real rate shocks, this will obviously impart a positive correlation in policy even in the absence policy cooperation or coordination. In this particular model given the assumption on parameters, there is no gain to monetary policy cooperation; the Nash best response policy rules - which in this model take the form of Taylor type rules - lead to the maximum level of global welfare that can be obtained in the absence of a commitment device outside the model. As for exchange rates, we derive a decomposition for the (log) nominal exchange rate as the sum of a price level term, and business cycle term, and a term which is the present value of expected future neutral real policy rate differentials, with a decline in the expected future neutral policy rate below its long run level associated with a *depreciation* of the exchange rate today. In this model, exchange rate depreciation in the face of a country specific r^* shocks is not the outcome a

‘beggar thy neighbor’ policy in either motive or realization, as trade is balanced period by period so that the exchange rate adjustment that occurs is required to maintain trade balance. Intuitively, if the country specific component of productivity is stationary, a positive shock to home productivity today sets up the expectation of future declines in productivity - and thus future declines in the neutral real interest rate - in the future. The rise in productivity today requires the home real interest rate to fall to boost aggregate demand at home but is also requires the nominal exchange rate to depreciate to adjust the terms of trade so that foreign demand rises to absorb some of the rise in home supply. By contrast, in this model exchange rates do not need adjust to the global component in neutral policy rates, realized or expected. In response to a global shock, a common global decline in real policy rates can ‘do all the work’ to generate global aggregate demand in line with aggregate supply. This may look like, but is not in this model a globally inefficient ‘currency war’ defined as a ‘race to the bottom’ in policy rates as countries seek to avoid rate differentials and home currency appreciation as other countries cut interest rates.

In Section IV, we study a more general specification (based on CGG (2002)) of the two country model in which there are international spillovers that can lead, in theory, gains to international policy cooperation. We argue however, that in practice, cooperation may be difficult to implement and communicate because in this model it would bind countries to set local policy rates based on an index of *global* inflation. Moreover, in this model with international spillovers, the neutral real policy rate in each country will depend on expected productivity growth in all countries (and potentially also global business cycle factors) even if there is no common factor in country productivity growth. As a result, there may be significant gains to policy coordination which are achievable in practice in the non-cooperative equilibrium where again optimal policy can be written as a Taylor type rule.

Section V provides some concluding remarks.

II. A Quick Review of the Empirical Evidence

As the motivation for this paper is the phenomenon of a time varying global factor in neutral real interest rates, it seems worthwhile at the outset to provide some evidence that these rates are time varying and that they appear correlated across countries. Similar to another input to monetary policy analysis – potential output – the neutral real policy rate is both time varying and unobservable and thus must be inferred from data. Laubach and Williams (2003) and more recently Holston, Laubach, and Williams (2017) have developed and implemented a widely cited methodology for estimating neutral real policy rates. The latter paper is especially useful for our purpose because it consistently applies the a common LW methodology to estimate neutral real policy rates in the US, UK, Canada, and Eurozone. Other papers – for example Hamilton, et al. (2015), King and Low (2014), Lucasz and Smith (2015), IMF (2013) – provide estimates that are also consistent with the presence of a global factor in time varying neutral real interest rates.

Figure 1: HLW Estimates of r^*

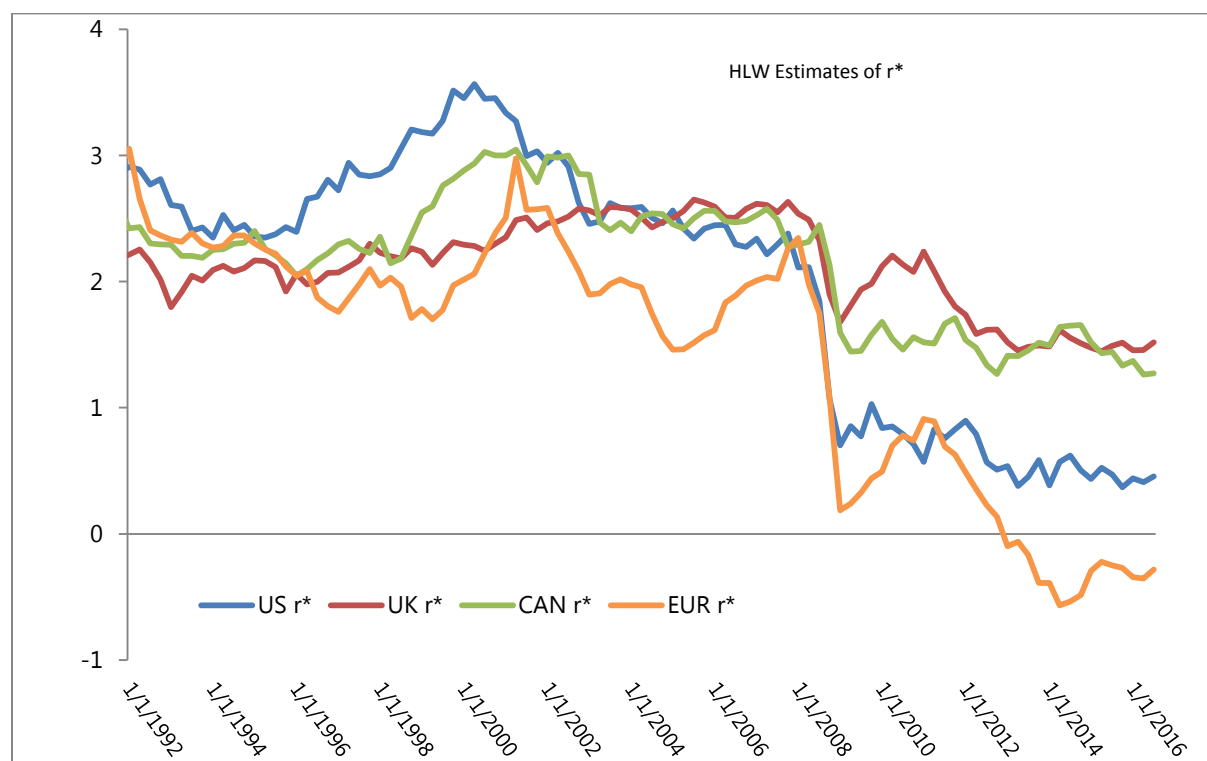
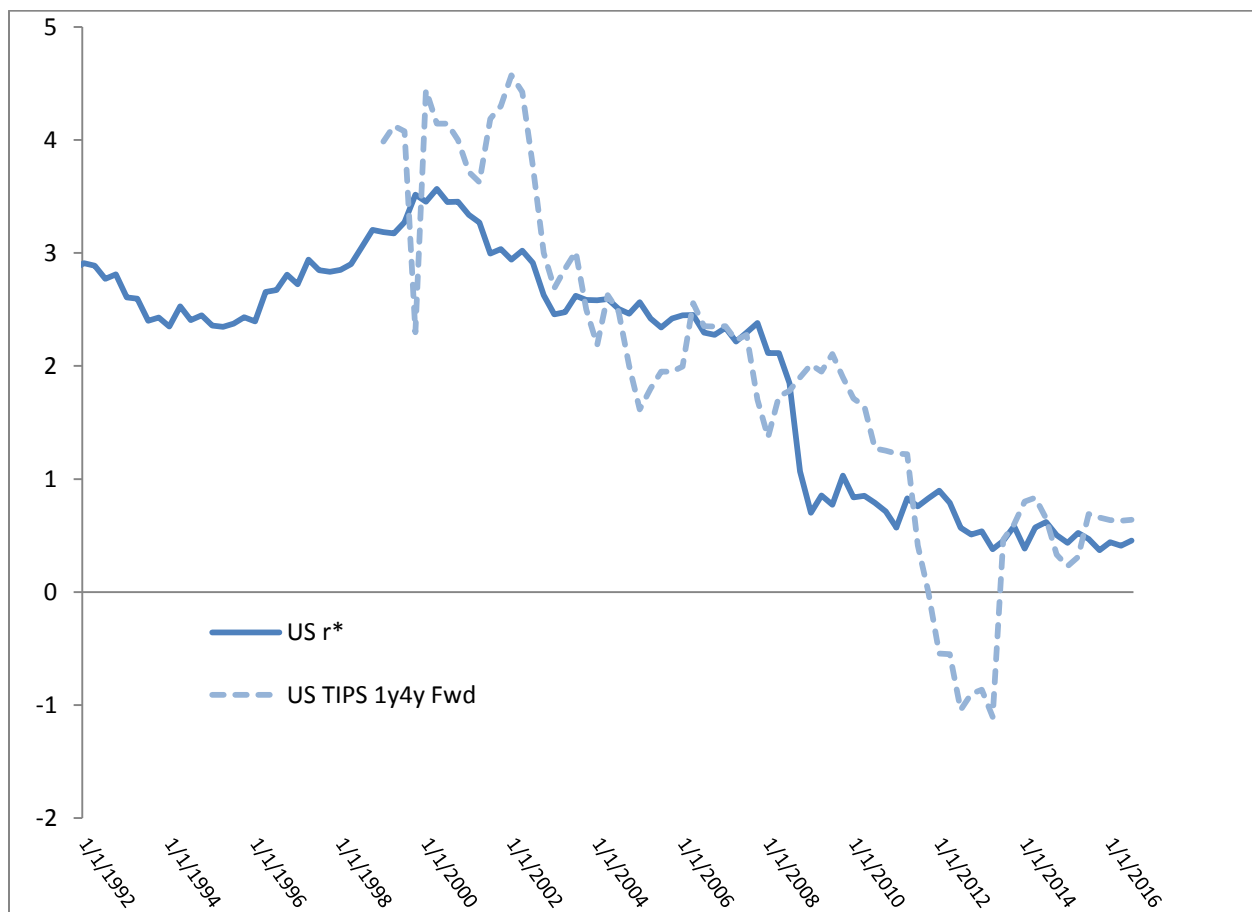


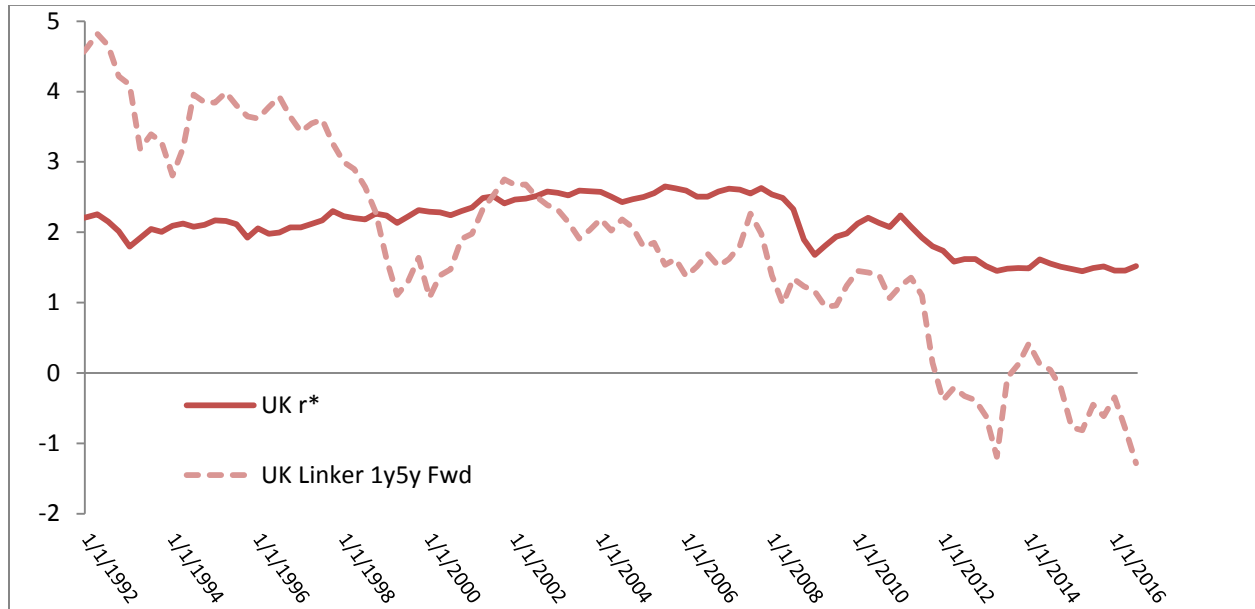
Figure 1 displays the HLW estimates of r^*_t for the US, UK, Europe, and Canada as of July 2016. For all four countries, estimates for recent years are well below those in the 1990s and in the years preceding the Global Financial Crisis. It is also interesting to note that for all countries, in the decade or so before the GFC, the estimates are clustered around 2% which of course is the assumed constant value for r^* in the original Taylor Rule. Figure 2, compares the HLW estimates of the US r^* with the 1 year TIPS yield 4 years forward as calculated by the Federal Reserve.

Figure 2: HLW r^* and TIPS Implied Forward



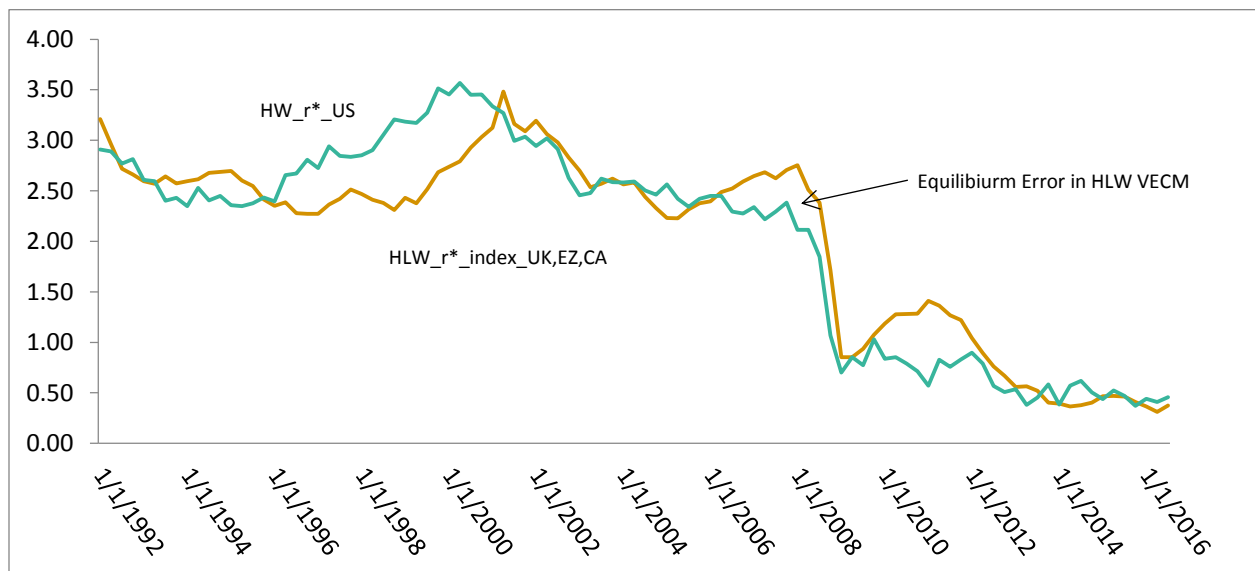
As the HLW econometric approach uses no data on TIPS yields or forwards so, the alignment between the two series is noteworthy. That said, as shown in Figure 3, there is a much looser relationship between forward real yields in the UK (as calculated by the Bank of England) and the HLW estimates of r^* for the UK.

Figure 3: HLW r^* and Implied Linker Forward



Finally, to get a sense of the co movement among the four neutral real policy rates, we plot the estimated r^*_t for the US versus a weighted average of the r^*_t estimates for the other three countries, with the weights equal to (minus) the estimated co integrating vector coefficients reported in HLW (2017) Table 3. The difference between these two series is the equilibrium error the VECM representation of the HLW system (since HLW normalize the US coefficient in the co-integrating vector to unity).

Figure 4: Equilibrium Error in the HLW VECM Representation



III. A Simple Model of Optimal Monetary Policy and Exchange Rate Determination with r^* Shocks

We begin with a tractable two country version of the Gail–Monacelli (2005) and Clarida (2014) DSGE model of optimal monetary policy and exchange rate determination extended to allow for global as well as country specific shocks to r^* . In this model, r^* shocks are driven by common as well as country specific shocks to home and foreign expected productivity growth. To focus on the main points, and without loss of generality, we assume in this section the ‘foreign’ country operates always at its supply determined level of output $Y^F_t = A^F_t = \bar{Y}^F_t$ and that foreign monetary policy is such that the price of foreign output is constant and equal to 1. By contrast, in the home country, ‘cost push’ shocks in the presence of nominal rigidities can cause output to deviate from its flexible price supply determined level of output so that $Y_t = A^F_t A_t X_t = \bar{Y}_t X_t$. In this model, aggregate home productivity is the product of a common global factor A^F_t and a home-country specific factor A_t . The home ‘output gap’, denoted X_t , is endogenous and will be solved for as a function of shocks and the monetary policy rule. An overstrike over a variable indicates its level in a flexible price equilibrium. In the model of this section, with our parameter choices, the flexible price level of output in each country is just equal to the exogenous level of productivity in that country.

Home utility takes the form $U(C_t) - V(N_t) = b \ln C_{H,t} + (1-b) \ln C_{F,t} - (1+\varphi)^{-1} N_t^{1+\varphi}$ where $C_t = (C_{H,t})^b (C_{F,t})^{1-b}$ and N_t is home labor supply and $b \geq 0.5$. These preferences feature an intertemporal elasticity of substitution $1/\sigma$ equal to 1 and a Cobb-Douglas aggregator for consumption. Households maximize a discounted sum of expected utility subject to a sequence of budget constraints

$$P_t^{cpi} C_t + E_t \{ M_{t,t+1} D_{t+1} \} = W_t N_t + D_t - T_t + \Gamma_t$$

where $M_{t,t+1}$ is a nominal stochastic discount factor, W_t is the money wage, D_t is the distribution paid on securities brought into date t , T_t is lump sum tax collection, and Γ_t is the distribution of profits earned by producers of intermediate inputs. Foreign preferences and budget constraints are symmetric.

Up to log linearization, an Euler equation will characterize the equilibrium relationship between the log consumption index (relative to its level in a non-stochastic steady state) , CPI inflation, and the one period nominal interest rate R_t

$$c_t = \mathbf{E}_t \{c_{t+1}\} - (R_t - \mathbf{E}_t \pi_{t+1}^{cpi})$$

With our assumptions on preferences, trade will be balanced period by period (Cole Obstfeld (1991)) and goods market equilibrium will imply $bA^F_t A_t X_t + (1-b)S_t A^F_t = A^F_t A_t X_t$ where S_t is the equilibrium terms of trade (home good price of foreign good) and $b \geq 1/2$ is the expenditure share on locally produced output. This implies $S_t = A_t X_t$ or in logs $s_t = a_t + x_t$ so that the log of the equilibrium terms of trade is equal to the home country specific factor in productivity a_t plus the log of the home 'output gap' x_t . We assume the law of one price and producer currency pricing so that the log nominal exchange rate satisfies $e_t = s_t + p_t$ where p_t is the log of the price of home output. We have $\pi_{t+1}^{cpi} = \pi_{t+1} + (1-b)\Delta s_{t+1}$ with $\pi_{t+1} = p_{t+1} - p_t$.

From balanced trade and goods market equilibrium $C_t = (b)^b (1-b)^{1-b} A^F_t A_t X_t S_t^{b-1}$. Substituting out for c_t and using the definition of CPI and the equilibrium condition for the terms of trade, we obtain an Euler equation in terms of the domestic output gap and the neutral real interest rate

$$(1) \quad x_t = \mathbf{E}_t x_{t+1} - \{R_t - \mathbf{E}_t (p_{t+1} - p_t) - r_t^*\}$$

where $r_t^* = \mathbf{E}_t \Delta a_{t+1}^F + \mathbf{E}_t \Delta a_{t+1}$ is the ex-ante real interest rate in the home country that maintains the home output gap at zero. We have $r_{t+1}^* = \mathbf{E}_t \Delta a_{t+2}^F$ period by period, $\pi_t^F = 0$ period by period, $R_t^F = r_t^*$ period by period, and $Y_t^F = A_t^F$ period by period. We assume that a_t is an auto correlated deviation of the log level of home productivity from the log level of global productivity a_t^F which may itself possess a unit root. Note that under this stationarity assumption $a_t + \mathbf{E}_t \sum_{i=1, \infty} \Delta a_{t+i} = 0$ if the unconditional mean of a_t is 0.

Home firms will set prices as a markup over marginal cost – which is proportional to the real product wage scaled by productivity - in a staggered fashion a la Calvo. With our assumption on preferences, and letting $\delta=(1-F)(1-\beta F)/F$ with $(1-F)$ the fraction of firms that reset prices each period, inflation in the price of home goods will be given by

$$(2) \quad p_t - p_{t-1} = \beta \mathbf{E}_t(p_{t+1} - p_t) + \lambda x_t + u_t$$

where u_t is a - possibly auto correlated - shock to the wage mark-up and $\lambda = (1+\phi)\delta$.

The nominal exchange rate must be consistent with asset market equilibrium, goods market equilibrium, and long run purchasing power parity (which will hold in this model in expectation in the long run under our assumptions on productivity and preferences). A structural equation which characterizes the equilibrium exchange rate in terms of endogenous variables can be written as

$$(3) \quad e_t = p_t + x_t - \mathbf{E}_t \sum_{i=0}^{\infty} (r_{t+i}^* - r_{t+i}^{F*})$$

where $r_t^* - r_t^{F*} = \mathbf{E}_t \Delta a_{t+1}$ is the *neutral real rate differential* between the home country and the foreign country . Thus the log nominal exchange rate can be decomposed into the sum of a *PPP component*, a *business cycle component*, and a (*forward looking*) *r^* component*. Equivalently, persistent but transitory deviations from PPP are the sum of a *business cycle component* and an *r^* component*. The nominal exchange rate today will reflect the entire expected future time path of the country specific component in the neutral real interest rate *but in equilibrium does not adjust to the global component in the neutral policy rate*. In particular, if today the neutral real rate at home is expected in the future to lie below the neutral real rate abroad, the nominal exchange rate today must weaken relative to domestic prices given the state of the business cycle x_t . Figure 5 depicts the empirical relationship between the nominal trade weighted dollar and the equilibrium error calculated using the parameters reported in HLW (2017) Table 3 and shown in Figure 4. The equilibrium error appears to lead the trade weighted dollar by about 12 quarters. The simple correlation between the TW Dollar and the VECM error lagged 12 quarters is 0.70.

Figure 5: US TWD vs. HLW Vecm Error

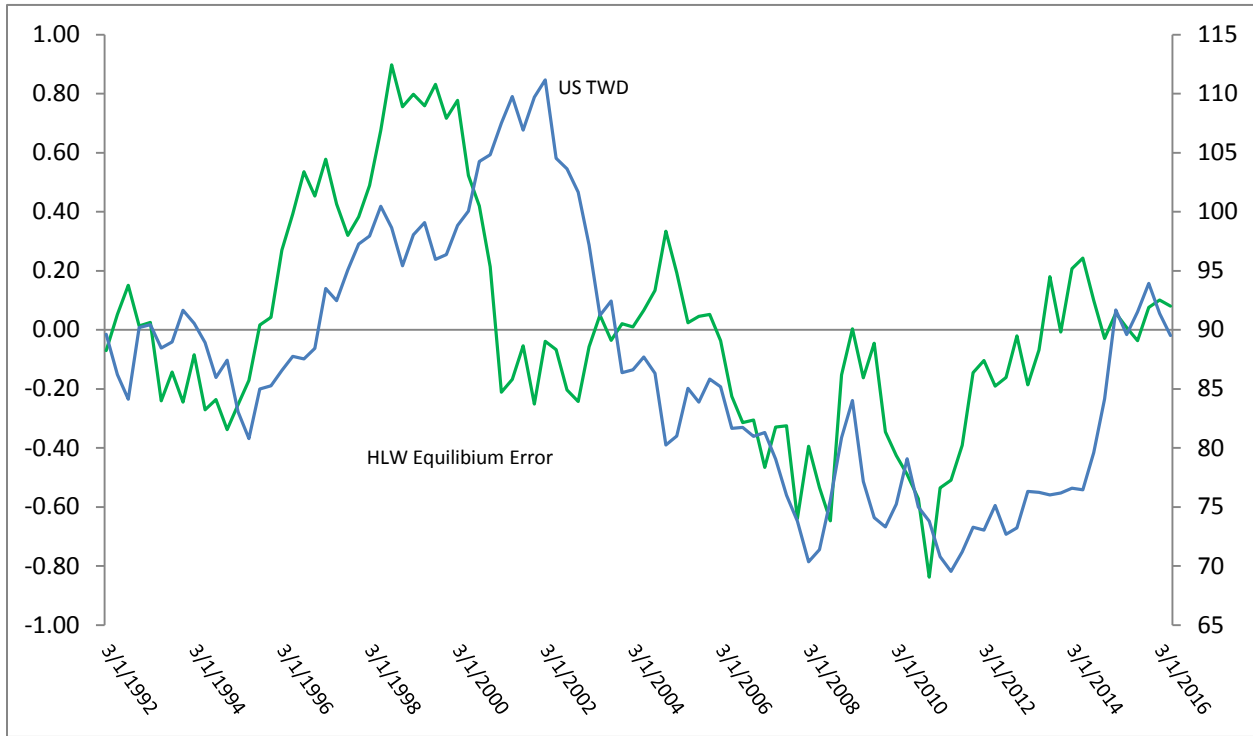
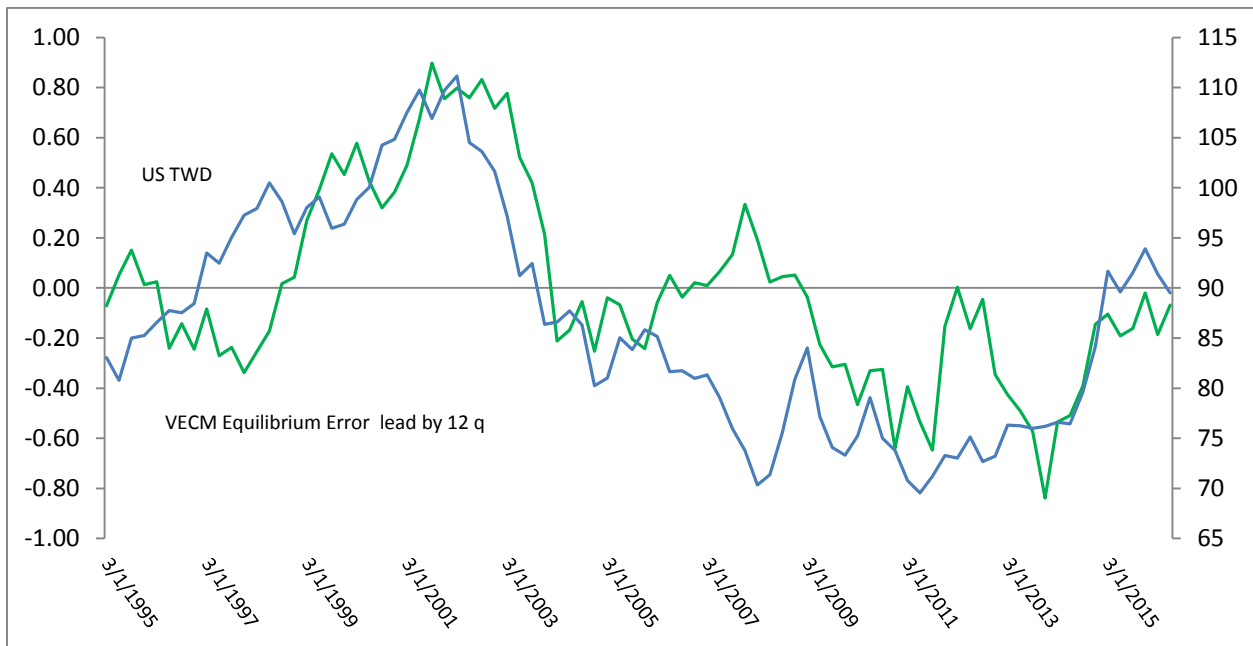


Figure 6: US TWD vs. HLW Vecm Error lead by 12 quarters



Notice that structural exchange rate equation (3) holds in any equilibrium regardless of how the rest of the model is closed. To close the model, we need to take a stand on monetary policy and the central bank objective function so we can pin down domestic inflation and the output gap. There are two ways to do this. We can just assume that the objective function is quadratic in inflation and the output gap with an arbitrary relative weight α on stabilizing home output at its natural level $a^F_t + a_t$. Or, as was derived in Clarida, Gali and Gertler (2002) and Gali Monacelli (2005), we can follow Woodford (2003) and solve for α – and thus the optimal policy rule – as a function of deep parameters. So for a

policy maker who wants to maximize an objective function proportional to $W^H = -E_0 \sum_{t=0}^{\infty} \beta^t [\pi_t^2 + \alpha x_t^2]$

subject to the Philipps curve and the Euler and taking $E_t \pi_{t+1}$ as given, the first order condition will be

$x_t = -\frac{\lambda}{\alpha} \pi_t$ which is of the same form as in Clarida, Gali and Gertler (1999). Since under optimal policy

the output gap will be linear in domestic inflation, the equilibrium rate of inflation under optimal policy will satisfy $\pi_t = \beta E_t \pi_{t+1} - (\lambda^2 / \alpha) \pi_t + u_t$. Solving forward and assuming $u_t = \rho u_{t-1} + \varepsilon_t$ we obtain

$$\pi_t = (1 - \beta\rho + \lambda^2/\alpha)^{-1} u_t$$

or $\pi_t = \psi u_t$. The optimal policy rule given α is obtained by substituting the first order condition into the Euler equation and using equilibriums dynamics for inflation. The system can be written as follows:

$$(4) \quad \begin{aligned} R_t &= r_t^* + \left(1 + \frac{\lambda(1-\rho)}{\alpha\rho}\right) \mathbf{E}_t \pi_{t+1} \\ R_t^F &= r_t^{F*} \end{aligned}$$

$$e_t = p_{t-1} + \left(\frac{\alpha - \lambda}{\alpha}\right) \psi u_t - \mathbf{E}_t \sum_{i=0}^{\infty} (r_{t+i}^* - r_{t+i}^{F*})$$

with $r_t^* = E_t \Delta a^F_t + E_t \Delta a_t$, $r_t^{F*} = E_t \Delta a^F_t$ and $E_t \pi_{t+1} = \rho \psi u_t$ and $p_{t-1} = \sum_{i=1, \infty} \psi u_{t-i}$. Thus optimal policy in the open economy can be written as a forward looking Taylor rule with a time varying neutral real interest rate .

The time varying neutral real interest rate is, in turn, the sum of a global component and a country specific component. Also notice that above we focus on *an* equilibrium with inflation proportional to the exogenous cost push shock u_t . As is well known, there are other equilibria in this class of DSGE models which feature speculative hyperinflation, and this would be true even if we were to append a standard utility of real balances into the objective function (see for example Kocherlakota and Phelan (1999) for an insightful discussion of this issue).

Notice in this set up, under optimal monetary policy, there is a clean distinction between impact of neutral rate shocks (driven by forecastable changes in productivity growth) and cost push shocks. Under optimal policy neutral rate shocks should be reflected one for one in policy rates and will result in equilibrium adjustments in nominal exchange rate to the country specific component in neutral real rate shocks. These adjustments in policy rates and exchange rate are sufficient to keep the economy at its flexible price equilibrium even in the presence of nominal rigidities. Cost push shocks, by contrast, create a tradeoff between stabilizing output and inflation. Under optimal policy, the central bank follows a forward looking Taylor rule and raises the nominal interest rate by more than the rise in expected inflation. This optimal policy depresses output below the flexible price level so as to stabilize expected inflation. The optimal policy will also have implications for the nominal exchange which will be discussed below. Note that cost push shocks have no effect on the neutral policy rate unless those shocks are themselves correlated with productivity shocks.

These three equations illustrate several points about neutral real rate shocks in open economies under flexible exchange rates that are worth noting.

- *The neutral real policy rate* in the open economy will in general be a function of *global* as well local factors such as the rate of current and expected future potential growth. If countries are adjusting policy

in response to common , global neutral real rate shocks, this will obviously impart a positive *correlation* in policy even in the absence policy coordination or *cooperation*.

-In this model with the parameter assumption we have made on the intertemporal elasticity of substitution, there is *no gain* to policy cooperation so that the Nash best response policy rules which here take the form of Taylor type rules - lead to the maximum level global welfare that can be obtained under discretion.

- *The exchange rate* is an asset price that will reflect , in part, expectations of the future time path of *the country specific component* of the neutral policy rate policy rate, with a decline in the expected future neutral policy rate below its long run level associated with a *depreciation* of the exchange rate today.

- However, exchange rate depreciation in the face of a persistent country specific r^* shock is not a 'beggar thy neighbor' policy in either motive or realization. In this simple model, trade is balanced period by period and so the exchange rate adjustment that occurs is required to maintain goods market equilibrium with balanced trade and not to generate a trade surplus.

- Exchange rate adjustment to a persistent country specific r^* shock is required because expectations that future home neutral rates will remain below neutral rates in the rest of the world are coincident with expectations that home productivity and output are and will remain elevated relative to their long run levels, and this elevated supply requires a weaker nominal exchange rate and a worsening terms of trade as well as a lower neutral policy rate to generate the level *and allocation* of global aggregate demand to clear the home and world goods market. In symbols - $E_t \sum_{i=1, \infty} r^{H^*}_t = a_t$

- By contrast, at least under optimal policy, *exchange rates do not need to adjust to the global component in neutral policy rates*, realized or expected. In response to a global shock, a common global decline in real policy rates can 'do all the work' to generate global aggregate demand in line with aggregate supply;

- This may look like, but is not a globally inefficient ‘currency war’ defined as a ‘race to the bottom’ in policy rates as countries seek to avoid home currency appreciation as other countries cut interest rates.

An interesting feature of these models which finds a great deal of empirical support and is discussed extensively in CGG (2002); Clarida Waldman (2007); Krugman Obstfeld Melitz (9th edition) ; and Clarida (2014) is the ‘bad news good news’ result that, with an inflation targeting central bank, a shock that pushes inflation above target can trigger the expectation of a policy rate path that results in an appreciation of the nominal exchange rate today even though in the long run the exchange rate must (in expectation) depreciate to return to PPP. In our model, bad news for inflation resulting from a positive cost push shock to u_t will appreciate the nominal exchange rate today if α – the welfare weight on output stabilization – is less than λ – the slope of the Philipps curve.

$$(5) \quad e_t = p_{t-1} + \left(\frac{\alpha - \lambda}{\alpha}\right) \psi u_t - \mathbf{E}_t \sum_{i=0}^{\infty} (r_{t+i}^* - r_{t+i}^{F*})$$

A ‘cost push’ shock u_t will increase domestic inflation and under optimal policy induce the central bank to raise the nominal interest rate by more than expected inflation. The rise in the ex-ante real interest rate will cause s_t to fall and this, along with the rise in the real interest rate itself, will reduce demand for home output. In the ‘bad news good news’ case the equilibrium decline in s_t is larger in absolute value than is the equilibrium rise in inflation, and this can only be accomplished via an appreciation of the nominal exchange rate. More broadly, the equilibrium nominal *exchange rate in this model must possess a unit root* even though shocks are stationary and our Cole-Obstfeld equilibrium replicates the complete market allocation. The nominal exchange rate must possess a unit root *because time consistent monetary policy cannot deliver a stationary price level, only a stationary rate of inflation* (Clarida, Gali and Gertler (2002); Woodford (2003)). The unit root in the nominal exchange rate is required to produce a stationary equilibrium terms of trade given that optimal monetary policy produces unit root in the price level.

IV. Policy Correlation, Gains from Policy Coordination, but Potential Pitfalls from Policy Cooperation

Although these are absent in the simple model of Section III, in general there may be international spillovers to monetary policy that are not fully incorporated in Taylor - type rules that feedback solely on domestic macroeconomic variables. If so, there can in theory be gains to monetary policy cooperation. However, while we *observe* that national monetary policies are often correlated (eras of global monetary easing; global rate hike cycles), they also *appear* sometimes to be coordinated (after all, what else are central bankers doing at all those G7 , G20, IMF, and Basel meetings?) , but rarely (if ever) do major central banks respect a binding commitment to pursue cooperative policies , policies that would differ from non-cooperative policies aimed solely at satisfying their objectives for domestic inflation and employment. It has long been well appreciated (Taylor (1982)) that in small or large scale open economy macro models, the calibrated gains to international monetary policy cooperation (see for example, Obstfeld and Rogoff (2002)) are found to be modest relative to the welfare achieved under a Nash equilibrium in which each country runs a sensible policy taking as given the policy of the other countries. In this section, we will make a somewhat different and less often discussed case against global monetary policy cooperation even in a world of r^* shocks. Namely, that in practice, adopting it – or succumbing to it! - could plausibly erode central bank credibility and public support for sound, rules based policies. According to this view, the all - in cost to a regime of policy cooperation could swamp the theoretical benefits, and if so, we should not bemoan the absence of formal monetary policy cooperation, we should celebrate it!

However, and perhaps especially in a world in which there is a common global component in neutral real policy rates across countries, international monetary policy *coordination* – defined to include the sharing of information and analysis regarding estimates of the unobservable inputs to policy rules such as the equilibrium real rate of interest and potential output as well as the considerations that would govern the timing and trajectory of a baseline policy path as well as trigger deviations from such a path –

can enhance the design and effectiveness of baseline policy rules. We will give examples below. But while international monetary policy *coordination* may enhance the efficiency of a policy rule framework if it is in place, there are reasons to doubt that in practice there are likely to be additional material, reliable, and robust gains that would flow from a formal regime of binding monetary policy *cooperation*, at least among major G7 economies and even including a number of emerging economies with flexible exchange rates and relatively open capital accounts. In such a regime, national monetary policies in *each* country are constrained to be set so as to jointly maximize *world* welfare. In these models, as in the earlier literature they build on, there are externalities to monetary policy that create such theoretical gains to cooperation. However, as Clarida, Gali, and Gertler (2002) and Engel (2009) illustrate in ‘new Keynesian’ models, and as we review below, to achieve the theoretical gains to international monetary policy cooperation, policy rates in *each* country must be set with reference to an index of inflation deviations from target in both *the home and the foreign countries*. In words, whereas optimal policy in the absence of cooperation can be implemented with a policy rule that reacts to domestic inflation, output gaps, and the appropriately defined equilibrium – or neutral – real interest rate, a global welfare increasing policy must bind central banks to policy rules that react to *foreign* as well as domestic inflation, policy rules that they would not choose were they not bound.

In practice, there could be another problem with policy cooperation in that is absent from most theoretical discussions. Simply stated, the problem is the threat to the credibility of the central bank, the challenges to central bank communication, and the resulting potential loss of support for its policy actions from the public when the policy choices required by cooperation react not only to home inflation but also to deviations of foreign inflation from target. For example, if home inflation is above target but foreign inflation is below target, the optimal policy rule under cooperation calls for the home (real) policy rate to be lower – more accommodative – than it would be in the absence of cooperation (Clarida, Gali, Gertler (2002)). In theoretical models, the commitment to the inflation target is just assumed to be

perfect and credible, but in practice credibility appears to be a function of central bank communication and as well the policies actually implemented to push inflation toward – and in the absence of shocks , to keep inflation at- target. In practice, central banks could have a hard time maintaining credibility as well as communicating a policy that kept home real interest rates low – or in extreme cases negative - not because home inflation is too low, but because foreign inflation is too low! Or imagine the opposite case, with home inflation below target when foreign inflation is above target. In this case, the optimal policy rule under cooperation calls for the home (real) policy rate to be higher – less accommodative – than it would be in the absence of cooperation, not because home inflation is too high, but because foreign inflation is !

While, perhaps for these reasons , we do not have many confirmed sightings of genuine monetary policy *cooperation* , we do perhaps observe rather more examples of as policy *coordination*. The CGG (2002) model – which is a generalization of the model of Section III - provides an illustration of the value of policy coordination in the non-cooperative Nash equilibrium in a symmetric two country model. We now allow for $\sigma > 1$ but set $b = 1/2$ so as to focus on the tractable symmetric case. Under these conditions the Cole Obstfeld result will still hold and trade will be balanced period by period. The log nominal exchange rate consistent with goods market equilibrium will satisfy

$$(6) \quad e_t = p_t - p^F_t + \bar{y}_t - \bar{y}^F_t + x_t - x^F_t$$

The neutral real interest rate that clears the home goods market at the flexible price level of output conditional on foreign output is given by (see CGG(2002); Clarida (2014) for all derivations)

$$(7) \quad r_t^* = \frac{(\sigma+1)}{2} E_t \Delta \bar{y}_{t+1}^F + \frac{(\sigma-1)}{2} E_t \Delta \bar{y}_{t+1}^F + \frac{(\sigma-1)}{2} E_t \Delta x_{t+1}^F$$

The neutral real interest rate that clears the foreign goods market at the flexible price level of output conditional on home output is given by

$$(8) \quad r_t^{F*} = \frac{(\sigma+1)}{2} E_t \Delta \bar{y}_{t+1}^F + \frac{(\sigma-1)}{2} E_t \Delta \bar{y}_{t+1}^F + \frac{(\sigma-1)}{2} E_t \Delta x_{t+1}^F$$

The neutral real rate differential is given by

$$(9) \quad r_t^* - r_t^{F*} = E_t (\Delta \bar{y}_{t+1} - \Delta \bar{y}_{t+1}^F) + \frac{(\sigma-1)}{2} E_t (\Delta x_{t+1}^F - \Delta x_{t+1})$$

Note that in the special case $\sigma = 1$ these equations simplify to their counterparts in Section III. Under our assumptions that a_t , u_t , and u_t^F are stationary with zero mean, the unconditional mean of home output is equal to the mean of foreign output and the unconditional means of the output gaps are zero. It follows that

$$(10) \quad e_t = p_t - p_t^F + \frac{(\sigma+1)}{2} (x_t - x_t^F) - E_t \sum_{i=0}^{\infty} (r_{t+i}^* - r_{t+i}^{F*})$$

As in the simpler model of Section III, we have a structural equation that decomposes the nominal exchange rate into a PPP term, a (relative) business cycle term, and a (forward looking) neutral real rate term. Ceteris paribus, it is again the country specific component of the home neutral real rate that is reflected in equilibrium nominal exchange rate, with a decline in the neutral rate inducing a depreciation of the nominal exchange rate.

In the simple model of Section III, the neutral real rate in each country is solely a function of that country's expected rate of productivity growth. However, when there are cross country spillovers, this will not be the case and instead, the neutral real rate in *each* country will be in equilibrium be a function *home and foreign productivity growth* as well as the *home and foreign business cycle factors* x_t and x_t^F . To see this, begin with the equations for flexible price output at home abroad derived in CGG (2002):

$$(11) \quad \bar{y}_t = \left(\frac{\sigma+1}{2} + \phi \right)^{-1} \left[(1+\phi)(a_t + a_t^F) + \frac{(1-\sigma)}{2} \bar{y}_t^F + \frac{(1-\sigma)}{2} x_t^F \right]$$

$$\bar{y}_t^F = \left(\frac{\sigma+1}{2} + \phi \right)^{-1} \left[(1+\phi)a_t^F + \frac{(1-\sigma)}{2} \bar{y}_t + \frac{(1-\sigma)}{2} x_t \right]$$

These two linear equations can be solved for \bar{y}_t and \bar{y}_t^F each as a function of a_t, a_t^F, x_t, x_t^F . It follows that

$$r_t^* = \frac{(\sigma+1)}{2} E_t \Delta \bar{y}_{t+1} (\Delta a_{t+1}, \Delta a_{t+1}^F, \Delta x_{t+1}, \Delta x_{t+1}^F) + \frac{(\sigma-1)}{2} E_t \Delta y_{t+1}^F (\Delta a_{t+1}, \Delta a_{t+1}^F, \Delta x_{t+1}, \Delta x_{t+1}^F) \quad (12)$$

$$r_t^{F*} = \frac{(\sigma+1)}{2} E_t \Delta \bar{y}_{t+1}^F (\Delta a_{t+1}, \Delta a_{t+1}^F, \Delta x_{t+1}, \Delta x_{t+1}^F) + \frac{(\sigma-1)}{2} E_t \Delta y_{t+1} (\Delta a_{t+1}, \Delta a_{t+1}^F, \Delta x_{t+1}, \Delta x_{t+1}^F)$$

which reduce to $r_t^* = E_t \Delta a_t^F + E_t \Delta a_t$ and $r_t^{F*} = E_t \Delta a_t^F$ in the $\sigma = 1$ case. Letting $\Psi_t = \bar{y}_t - \bar{y}_t^F$ denote

the flexible price output differential we have $\Psi(a_t, x_t, x_t^F)$ so that the flexible price output differential

is in equilibrium a function of relative home productivity – as in the simpler model of Section III – as well

as the home and foreign output gaps. In sum, regardless of how we close the model we must have

$$e_t = p_t - p_t^F + \frac{(\sigma+1)}{2} (x_t - x_t^F) - E_t \sum_{i=0}^{\infty} (r_{t+i}^* - r_{t+i}^{F*})$$

with

$$r_t^* - r_t^{F*} = E_t \Psi(\Delta a_{t+1}, \Delta x_{t+1}, \Delta x_{t+1}^F) + \frac{(\sigma-1)}{2} E_t (\Delta x_{t+1}^F - \Delta x_{t+1}) \quad (13)$$

We close the model with an policy rule that is the optimal best response taking the other country's output as given. In the 'home' country CGG (2002) show that the optimal Nash monetary policy rule can be written as a forward looking Taylor rule

$$R_t = r_t^* + \left(1 + \frac{\lambda(1-\rho)}{\alpha\rho} \frac{\sigma+1}{2} \right) E_t \pi_{t+1} \quad (14)$$

And similarly in the foreign country

$$R_t = r_t^{F*} + \left(1 + \frac{\lambda(1-\rho)}{\alpha\rho} \frac{\sigma+1}{2} \right) E_t \pi_{t+1}^F \quad (15)$$

Under the optimal Nash monetary policies we still have

$$x_t = -\frac{\lambda}{\alpha} \pi_t \quad \text{and} \quad x_t^F = -\frac{\lambda}{\alpha} \pi_t^F$$

And so under optimal policy as before $\pi_t = (1-\beta\rho + \lambda^2/\alpha)^{-1} u_t$ and $\pi_t^F = (1-\beta\rho + \lambda^2/\alpha)^{-1} u_t^F$.

In this more general model, the neutral real interest rate in each country will be a linear function of home and foreign productivity as well as the cost push shocks, and this will be true even if home and foreign productivity are independent (see equation block (12)). Thus, *even if there is no global component to productivity there will be in general equilibrium be a global component to the neutral real interest rate* because of the cross country spillovers that arise when σ is not equal to 1. We illustrate this with a numerical example. Let $\sigma = 3$ and $\phi = 1$ and solve equation block (11) for home and foreign flexible price output for the case in which home productivity is independent of foreign productivity (so that log productivity at home is equal to a_t instead of $a_t + a^F_t$ in equation block (11)). The solutions are

$$(16) \quad \bar{y}_t = \frac{6}{8}a_t + \frac{1}{8}x_t - \frac{2}{8}a^F_t - \frac{3}{8}x^F_t \quad \text{and} \quad \bar{y}^F_t = \frac{6}{8}a^F_t + \frac{1}{8}x^F_t - \frac{2}{8}a_t - \frac{3}{8}x_t$$

which imply that relative flexible price output is simply

$$(17) \quad \bar{y}_t - \bar{y}^F_t = a_t - a^F_t + \frac{1}{2}(x_t - x^F_t)$$

So from equation (12) we have for these parameters

$$r_t^* = 2\mathbf{E}_t\left(\frac{6}{8}\Delta a_{t+1} + \frac{1}{8}\Delta x_{t+1} - \frac{2}{8}\Delta a^F_{t+1} - \frac{3}{8}\Delta x^F_{t+1}\right) + \mathbf{E}_t\left(\frac{6}{8}\Delta a^F_{t+1} + \frac{9}{8}\Delta x^F_{t+1} - \frac{2}{8}\Delta a_{t+1} - \frac{3}{8}\Delta x_{t+1}\right)$$

which simplifies to

$$(18) \quad r_t^* = \frac{10}{8}\Delta a_{t+1} + \frac{2}{8}\Delta a^F_{t+1} + \frac{3}{8}\Delta x^F_{t+1} - \frac{1}{8}\Delta x_{t+1}$$

and symmetrically for the foreign country. So in general, even if home and foreign productivity are uncorrelated, the neutral real rate in each country will be a function of both home and foreign productivity.

The best Nash policy in this two country model is a Taylor type rule for setting the policy rate as a function of expected home inflation and time varying equilibrium home real interest rate which is function of expected home and foreign productivity growth as well as the expected change in home and foreign output gaps. Thus, to the extent the foreign central bank has some comparative advantage in

nowcasting (in the rigorous sense of Giannone, Reichlin, and Small (2008)) or forecasting foreign productivity growth and business cycle factors, sharing this information or even pooling these nowcasts with the home central bank could improve its estimate of the home equilibrium real interest rate and thus the effectiveness of its policy rule in meeting its domestic objectives. While in the simple models of Section III and IV the global drivers of the r^* 's are assumed to be observed and with known values of the parameters mapping them to neutral policy rates, in practice this is not the case and coordination in such signal extraction efforts could be very valuable.

As discussed above, to achieve the theoretical gains from monetary policy cooperation in these models it no longer suffices for the policymaker to follow an instrument rule based solely on domestic inflation and the neutral real interest rate. Instead, under cooperation the home central bank must set the policy rate as a function of home and foreign variables. In its simplest form, this rule can be written as

$$(16) \quad R_t = r_t^* + \left(1 + \frac{\lambda(1-\rho)}{\alpha\rho} \frac{\sigma+1}{2}\right) E_t \pi_{t+1} + \frac{\sigma-1}{\sigma+1+2\phi} \left(\frac{\lambda(1-\rho)}{\alpha\rho} \frac{\sigma+1}{2}\right) E_t \pi_{t+1}^F$$

In sum, not only do the quantitative gains from time inconsistent cooperative monetary policy rules appear to be modest, but in addition the policy rules required to implement the cooperative outcome could well be difficult to communicate and to adhere to without sacrificing the credibility of the inflation target and the policy regime itself.

V. Concluding Remarks

We have reviewed some simple examples based on rigorous models which can i) generate monetary policy correlation – via the global factor present in each country's equilibrium real interest rate; ii) rationalize the alleged benefits to monetary policy coordination ; but iii) provide some intuition for why binding monetary policy cooperation is rare in practice if not in academic papers. We have focused on the global factor in neutral real policy rates and shown how a plausible source of fluctuations in these rates (productivity growth with a global as well as country specific component) also can trigger adjustment in the nominal exchange rates. A country specific shock that pushes the expected path of the home r^*_t below the foreign r^*_t requires a depreciation of the home nominal exchange rate to maintain global equilibrium even with balanced trade. By contrast, a common global shock that depresses home and foreign neutral real policy rates equally will have no exchange rate implications. While these models are quite simple and in particular omit important potential additional drivers of neutral real policy rates – such as asset market imperfections and institutional and individual desires to hold safe assets – they are rich enough to shed light on the importance of global general equilibrium considerations in accounting for and inferring shifts in country neutral policy rates. One topic for future research is modeling medium and long horizon forecastable changes in neutral real policy rates as are estimated by HLW. The neutral real rates that we solve for in the models of Sections III and IV are the rates consistent with the stochastic flexible prices equilibrium in these workhorse DSGE models and may be thought of a 'short run' r^* 's. In the models of Section III and IV, the unconditional mean of these home and foreign r^* 's are constant and equal. A worthwhile extension beyond the scope of this paper would be to introduce non stationary dynamics and or segmented trends (Rappoport and Rechlin (1989)) into relative productivity levels which would allow for a tighter linkage between the HLW econometric methodology and the theoretical modeling of time variation in r^* .

References

- Calvo, G., "Staggered Prices in a Utility-Maximizing Framework," *Journal of Monetary Economics* 12: 383-398 (1983).
- Clarida, Richard H. "Monetary policy in open economies: Practical perspectives for pragmatic central bankers." *Journal of Economic Dynamics and Control* 49 (2014): 21-30.
- Clarida, R., J Gali, and Gertler, " Monetary Policy Rules in Practice: Some International Evidence," *European Economic Review*, (1998).
- _____, "The Science of Monetary Policy," *Journal of Economic Perspectives*, (1999).
- _____, "A Simple Framework for International Monetary Policy Analysis," *Journal of Monetary Economics* 49: 879-904 (2002).
- Clarida, R and D Waldman, "Is Bad News about Inflation Good News for the Exchange Rate" in John Campbell, Editor, Asset Prices and Monetary Policy, Chicago: University of Chicago Press, 2008.
- Cole, H L., and M Obstfeld, "Commodity Trade and International Risk Sharing: How Much Do Financial Markets Matter?" *Journal of Monetary Economics* 28: 3-24 (1991).
- Cook, David, and Michael B. Devereux. "Sharing the burden: monetary and fiscal responses to a world liquidity trap." *American economic Journal: macroeconomics* 5, no. 3 (2013): 190-228.
- Engel, C. *Currency misalignments and optimal monetary policy: a reexamination*. No. w14829. National Bureau of Economic Research, 2009.
- Ferrari, Massimo, Jonathan Kearns, and Andreas Schrimpf. "Monetary shocks at high-frequency and their changing FX transmission around the globe." (2016).
- Friedman, M. "The Role of Monetary Policy" *The American Economic Review* 58, no. 1 (1968).
- Gali, J. Monetary Policy, inflation, and the Business Cycle: An introduction to the new Keynesian Framework. Princeton University Press, 2008.
- _____, "Forward Guidance and Exchange Rates", mimeo, CREI, May 2017.
- Gali, J, and T Monacelli, "Monetary Policy and Exchange Rate Volatility in a Small Open Economy," *Review of Economic Studies* 72: 707-734 (2005)
- Giannone, D., Reichlin, L. and Small, D., 2008. Nowcasting: The real-time informational content of macroeconomic data. *Journal of Monetary Economics*, 55(4), pp.665-676.

Haldane, Andrew G. "Stuck" speech by Chief Economist." *Bank of England, Open University, Milton Keynes* 30 (2015).

Hamilton, James D., Ethan S. Harris, Jan Hatzius, and Kenneth D. West. "The equilibrium real funds rate: Past, present, and future." *IMF Economic Review* 64, no. 4 (2016): 660-707.

Henderson, D. W., & McKibbin, W. J., "A Comparison of some basic monetary policy regimes for open economies: implications of different degrees of instrument adjustment and wage persistence." In *Carnegie-Rochester Conference Series on Public Policy* (1993, Vol. 39, pp. 221-317). North-Holland.

Holston, Kathryn, Thomas Laubach, and John C. Williams. "Measuring the natural rate of interest: International trends and determinants." *Journal of International Economics* (2017).

IMF World Economic Outlook , Fall (2013).

King, Mervyn, and David Low. *Measuring the "world" real interest rate*. No. w19887. National Bureau of Economic Research, 2014.

Kocherlakota, Narayana, and Christopher Phelan. "Explaining the fiscal theory of the price level." *Federal Reserve Bank of Minneapolis. Quarterly Review-Federal Reserve Bank of Minneapolis* 23, no. 4 (1999): 14.

Krugman, P. M. Obstfeld, M. Melitz, International Economics Prentice Hall Page 2011

Kydland, F E., and E C. Prescott. "Rules rather than discretion: The inconsistency of optimal plans." *The Journal of Political Economy* (1977): 473-491.

Laubach, T, and J. C. Williams. "Measuring the natural rate of interest." *Review of Economics and Statistics* 85.4 (2003): 1063-1070.

Lukasz, R. and T. Smith, "Secular Drivers of Global real Interest Rates," bank of England discussion paper 571 (2015).

Obstfeld, M. and K. Rogoff, Foundations of International Macroeconomics, MIT Press, 1997.

_____, "New directions for stochastic open economy models." *Journal of international economics* 50.1 (2000): 117-153.

Rappoport, P. and Reichlin, L., 1989. Segmented trends and non-stationary time series. *The Economic Journal*, 99(395), pp.168-177.

Taylor, J, B., 1982, Macroeconomic tradeoffs in an international economy with rational expectations, in: Hildebrand, ed., Advances in economic theory (Cambridge University Press, Cambridge).

_____, Macroeconomic Policy in a World Economy: From Econometric Design to Practical Operation, W.W. Norton, New York, 1993.

_____, "Discretion Versus Policy Rules in Practice," *Carnegie-Rochester Series on Public Policy*, North-Holland, 39, 1993, pp. 195-214.

Wicksell, Knut. "Interest and Prices, trans." *RF Kahn with an introduction by* (1898).

Woodford, M , *Interest and Prices: Foundations of a Theory of Monetary Policy*, Princeton: Princeton University Press, 2003.

_____, Globalization and Monetary Control, in Galí, Jordi, and Mark Gertler, eds. *International Dimensions of Monetary Policy*. University of Chicago Press, 2010.

Yellen, Janet L. *The Economic Outlook and the Conduct of Monetary Policy: a speech at the Stanford Institute for Economic Policy Research, Stanford University, Stanford, California, January 19, 2017*. No. 935. 2017.

Comments by Narayana Kocherlakota¹

Introduction

Richard Clarida's thoughtful paper (2017) discusses some implications of cross-country correlation in the natural real rate of interest (r^*). However, the paper abstracts from the presence of a lower bound on the nominal interest rate. In my discussion, I ask how a permanent decline in the value of the natural real rate of interest (r^*) affects the desirability of global coordination in the making of monetary policy. I argue that such a decline makes coordination more desirable because a binding interest rate lower bound implies that there is an externality associated with the monetary policy choices of other (unconstrained) central banks. Intuitively, an unconstrained central bank should run hot (relative to its own country's interests) in order to provide needed stimulus in countries that are constrained.

A multicountry model

In this section, I set forth a multicountry model. My main simplification is that, motivated by the observation that Phillips curves in many parts of the world seem to be nearly horizontal, I abstract from the effects of monetary policy on expected inflation and the expectations of exchange rate appreciation/depreciation. This modelling approach resembles that adopted by Farhi and Werning (2016) and Caballero et al (2016), among others. It implies that central banks can directly influence the real interest rate by varying the nominal interest rate.²

Given this assumption, the rest of the model is straightforward. There are N countries. There is a central bank in each country that picks the prevailing (short-term) nominal interest rate for that country. As in New Keynesian models, aggregate output is demand-determined. The global demand for a given country's goods is a strictly decreasing function of *all* countries' interest rate choices.

Mathematically, the model can be summarised as follows. The level of output Y_n in country n is determined by the various central bank choices as follows:

$$Y_n = AD_n(R_n; R_{-n}, \theta_n), n = 1, \dots, N$$

Here, AD_n represents the *global* demand for country n 's goods and is a strictly decreasing function of its first N arguments. The last argument θ_n is a random demand shifter. I treat the vector $\Theta = (\theta_1, \dots, \theta_N)$ as common knowledge; this is equivalent to assuming that the country-specific levels of r^* are commonly known.

¹ University of Rochester.

² Cook and Devereux (2013) study the impact of interest rate lower bounds on the desirability of monetary policy coordination in a model in which monetary policy does affect exchange rates. Unlike what I show below, they find that coordination may be desirable even when all central banks are constrained by their lower bounds.

The central bank in country n chooses the nominal interest rate R_n so as to maximise its objective

$$V_n = -(Y_n - Y_n^{target})^2$$

This objective says that the central bank is averse to both upside and downside deviations from its target level of output.

I examine to what extent the decentralised central bank choices maximise global welfare, which is defined as:

$$W(V_1, \dots, V_N)$$

where W is a differentiable function that is strictly increasing in all of its arguments. I think of this function as representing a measure of the ex ante utility of an agent who faces the risk of being located in any one of the N countries. I have not imposed the expected utility hypothesis, which would restrict W to be linear.

Without an interest rate lower bound

In this section, I consider a game in which all central banks choose their nominal interest rates simultaneously. I impose the following regularity conditions on aggregate demand:

$$\begin{aligned} \lim_{R_n \rightarrow -1} AD_n(R_n; \cdot) &= \infty \\ \lim_{R_n \rightarrow \infty} AD_n(R_n; \cdot) &= 0 \end{aligned}$$

These regularity conditions ensure that a central bank can, by varying its own nominal interest rate, generate any level of aggregate demand.

Given these regularity conditions, central bank n 's best response function BR_n is to choose the interest rate that delivers its target output:

$$Y_n^{target} = AD_n(BR_n(R_{-n}, \theta_n), R_{-n}; \theta_n)$$

The Nash equilibrium to this game, as a function of Θ , is a nominal interest rate vector $R^*(\Theta)$ that solves the N non-linear equations:

$$Y_n^{target} = AD_n(R_n^*(\Theta), R_{-n}^*(\Theta); \theta_n), n = 1, \dots, N$$

In any Nash equilibrium, every country's objective is equal to its maximum of zero (because every country's output is at target). Since every country's objective is maximised in any Nash equilibrium outcome, global welfare is also maximised in any Nash equilibrium outcome in the decentralised game. In the absence of interest rate lower bounds, there is no need for any kind of global coordination.

With an interest rate lower bound

I now suppose that each central bank n faces an interest rate lower bound R_n^{LB} . Again, I consider a game in which the N central banks choose their interest rates simultaneously. In this game, the Nash equilibrium outcome (as a function of the vector Θ of demand shifters) is given by:

$$R_n^{**}(\Theta) = \max(BR_n(R_{-n}^{**}(\Theta), \theta_n), R_n^{LB}), n = 1, \dots, N$$

Again, I ask the question: when does this Nash equilibrium in a decentralised game maximise global welfare? There are three cases: all central banks are unconstrained, all central banks are constrained, and some are constrained while others are not.

Symmetric case 1: all central banks are unconstrained

Suppose all central banks are unconstrained in a Nash equilibrium outcome so that:

$$R_n^{**}(\Theta) > R_n^{LB} \text{ for all } n = 1, \dots, N$$

Then, as above, this outcome also maximises global welfare because all countries have achieved their target levels of output. Again, in this symmetric case, there is no need for global coordination.

Symmetric case 2: all central banks are constrained

Suppose that, given Θ , all central banks are constrained in a Nash equilibrium outcome so that their outputs are below target:

$$Y_n^{**}(\Theta) < Y_n^{target}, n = 1, \dots, N$$

In this outcome, every central bank's interest rate is equal to its lower bound (or it would raise output by lowering its interest rate). So, it is also only possible for a global planner to deviate from this outcome by raising interest rates in some country. But such a deviation lowers every country's output and so serves to lower global welfare.

It follows that in this symmetric case, there is no need for global coordination.

Asymmetric case

Now suppose that, given Θ , the Nash equilibrium outcome $R^{**}(\Theta)$ is asymmetric in the sense that:

$$\text{For some } n, Y_n^{**}(\Theta) < Y_n^{target}$$

$$\text{For some } m, R_m^{**}(\Theta) > R_m^{LB}$$

The output of some country n is too low relative to its target, because it is constrained by the lower bound on its nominal interest rate. At the same time, there is some country m that is unconstrained by its lower bound.

In this case, it is possible for a global central planner to improve on this outcome. In particular, suppose the planner lowered the interest rate in country m by a small amount. This change improves the welfare of all countries that, like country n , are constrained. At the same time, it lowers the welfare of all countries that, like country m , are unconstrained. The key is that all of the former welfare changes are first-order and all of the latter welfare changes are second-order. On net, lowering the interest rate by a small amount in an unconstrained country increases the global planner's objective.

More intuitively, when some countries are constrained by their lower bound and others are not, there is a gain to global coordination. To maximise global welfare, the

unconstrained central banks should run their economies “hot” in order to help out the constrained countries.

Wrap-up

In his paper, Clarida documents that there has been a global decline in the natural real rate of interest r^* . But, as he argues, there are also country-specific differences in the level of r^* . This combination of a simultaneous but heterogeneous decline in r^* increases the probability of some central banks being constrained by their interest rate lower bounds when other are not. In my discussion, I show that this possibility increases the benefits associated with the global coordination of monetary policy.

At the conference, several participants expressed scepticism about the *feasibility* of global monetary policy coordination. My discussion has nothing new to say about this issue: it is limited in scope to the consideration of the enhanced *desirability* of coordinating monetary policy created by a heterogeneous decline in r^* . However, it does seem that we now live in a world in which there is a risk that the United States could be constrained by its lower bound when Europe is not, and there is a risk that the opposite could be true. If we accept this premise, then (ex ante) monetary policy coordination is really a mutual (partial) insurance arrangement against these two risks. It is conceivable that, in a dynamic context, such a partial insurance arrangement could be supported using “reversion to autarky” threats (much as in Kocherlakota (1996)).

References

- Caballero, R, E Farhi and P-O Gourinchas (2015): “Global imbalances and currency wars at the ZLB”, *NBER Working Paper*, no 21670.
- Clarida, R (2017): “The global factor in neutral policy rates: some implications for exchange rates, monetary policy, and policy coordination,” Annual BIS Research Conference.
- Cook, D and M Devereux (2013): “Sharing the burden: monetary and fiscal responses to a world liquidity trap”, *American Economic Journal: Macroeconomics*, no 5, pp 190–228.
- Farhi, E and I Werning: “A theory of macroprudential policies in the presence of nominal rigidities”, *Econometrica*, vol 84, pp 1645–704.
- Kocherlakota, N (1996): “Implications of efficient risk sharing without commitment”, *Review of Economic Studies*, vol 63, pp 595–609.

The global factor in neutral policy rates: some
implications for exchange rates, monetary policy and
policy coordination

by

Richard Clarida

Discussion

Lucrezia Reichlin

This version: 5 May 2018

1 The model and its implications

The point of the paper is to derive implications for monetary policy cooperation of the standard open macro DSGE model. Three features are pointed out:

1. The model implies correlation of policy even without cooperation since monetary policy must respond to foreign factors conveying information on factor productivity.
2. Equilibrium exchange rate only adjusts to idiosyncratic shocks to the output gap (at least in the simplest version of the model). In a model where there is trade balance at every period, what looks like beggar-by-neighbour policy is just equilibrium adjustment.
3. Small deviation from the assumptions lead to optimal monetary policy responding to both foreign productivity and to the output gap and exchange rate adjusting to both foreign and home output gap.

Given these features and given that cooperation is difficult to implement and constitutes a challenge for rule based policy, “a practical man recommendation” is to adopt a minimalistic approach to cooperation consisting in cooperating on information sharing to identify foreign factors to which Nash optimal monetary policy must respond.

2 Discussion

My discussion has two parts. In the first part i will not question the model. On the contrary, I will consider the simplest version of the inter-temporal model of the current account and show that empirically it is indeed the case that modelling the joint international dynamics of macro data helps forecasting consumption and identifying the world equilibrium interest rate. This supports Richard’s suggestion that information sharing across central banks on data might be useful.

In the second, I question a basic feature of the model that leads to shut down an important channel for monetary policy cooperation in the area of macro prudential policies.

2.1 Discussion Part 1: empirical implications of the model

The Euler equations of the standard open macro model imply that expected consumption depends on both domestic and foreign variables. This can be seen from the following equation:

$$E_t \Delta C_{i,t+1} = \gamma_i r_t^W + \alpha_i E_t (\pi_{t+1}^W - \pi_{i,t+1})$$

where $C_{i,t}$ is consumption in country i at time t , r_t^W is the world real interest rate equilibrium at time t and $\pi_{i,t}$ is the inflation rate in country i at time t .

It is easily seen that only under pure autarky we have a situation in which only domestic variables matter. Otherwise they should matter for predicting consumption and identifying the world equilibrium rate.

There is ample evidence that this model fails the data. However it may be still true that joint modelling of multi-country data and the restrictions implied by the model help forecasting. Moreover, the model implication that consumption is proportional across countries may be a useful restriction to be exploited empirically.

I ask two questions.

1. Does a multi-country Vector Auto Regression (VAR) model on consumption outperform a single country model in predicting consumption?
2. Does the restricted VAR implied by the Euler equation outperform the unrestricted VAR for the same purpose?

A negative answer would imply that in this simple world there is not even scope for cooperation on data sharing.

I specify a VAR including data for the G7 countries on consumption, net output, inflation and interest rates and run three specifications: (i) an unrestricted single country model; (ii) an unrestricted multi-country model; (iii) a restricted multi country model.

The sample is 1970-2005 and the data are annual.

Result 1: the multi country model does better than a single country model

Table 1: Forecasting Consumption
Root Mean Squared Error relative to random walk

	Country Models			World Model		
	h=1	h=2	h=3	h=1	h=2	h=3
Canada	1.19	1.53	1.80	0.95	0.95	0.88
Germany	1.18	1.32	1.33	1.02	1.06	1.05
France	1.20	1.42	1.69	0.90	0.81	0.69
UK	1.46	1.65	1.62	0.93	0.92	0.88
Italy	1.59	2.41	2.76	0.95	0.96	0.94
Japan	1.05	1.21	1.28	0.94	0.97	0.95
USA	1.14	1.45	1.67	0.92	0.84	0.76

MSE ratios wrt naive forecast
Evaluation Sample 1990-2005

Result 2: the restricted model does better than the unrestricted

Table 2: Consumption forecast
Root mean squared errors relative to the random walk

	Unrestricted	Restricted
Canada	1.03	0.97
Germany	0.78	0.76
France	0.82	0.73
UK	1.01	1.76
Italy	0.88	0.81
Japan	0.61	0.52
USA	1.05	1.36

MSE ratios wrt naive forecast
Evaluation Sample 1990-2005

I conclude that exploiting multi-country data can be useful for monetary policy and that the basic open macro model, although simple, delivers useful restrictions for the

analysis of multi-country data¹.

2.2 Discussion Part 2

Empirically, preference for safety and liquidity matter: treasury bonds are valued not only for their financial returns, but also for their safety and liquidity. This suggests that the basic DSGE model used in the paper is missing an important feature. How important?

Recent empirical evidence (Caballero et al. [2016] and Del Negro et al. [2017]) suggests that much of the steady decline in treasury rates since the late 1990s is due to an increase in the premium that investors are willing to pay for safety and liquidity (demand for safe assets) while returns on securities that are less liquid and less safe than Treasuries, such as corporate bonds, have declined much less. In particular, Del Negro et al. [2017] show empirically that “convenient yields” are main drivers of the trend in the equilibrium real rate. This is done via both a reduced form model and a DSGE model.

The key empirical result from the estimated DSGE model is reported in the chart below which shows the contribution of the risk premium to the real interest dynamic.

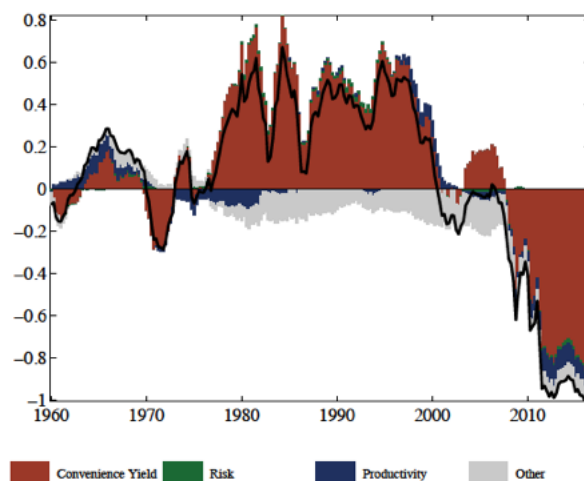
A different literature documents the international correlation of risk premia. For example, Miranda-Agrippino and Rey [2015] show that the return of a risky asset is determined by both global and asset specific factors, with the former being linked to the aggregate market volatility and the degree of risk aversion of the market.

These results imply that a natural area of international cooperation amongst central banks is macro-prudential policy.

¹The empirical exercise here is part of a presentation at the ESSIM-CEPR annual conference in 2007 coauthored with D. Giannone and M. Lenza

DSGE Result #2: Convenience Yield is the main driver of trends in r_t^*

Decomposition of Thirty-year Ahead Forward Rate ($E_t r_{t+30Y}^*$)



Del Negro, Giannone, Giannoni, Tambalotti

Safety, Liquidity, and the Natural Rate of Interest

BPEA, Spring 2017 13

Figure 1: DSGE Result #2

3 Conclusions

The standard open macro DSGE model implies that there is little scope for cooperation although foreign variables can be exploited to forecast variables to which monetary policy should respond. The data suggest that empirically international data are useful to forecast consumption and that restrictions implied by the model can be exploited for that purpose.

The model however has severe limitations, in particular because it does not take into account risk premia. Empirically, many authors have documented the importance of risk premia in explaining the dynamic of real rates. When this is considered, and given the empirical evidence on the international correlation of risk, one should conclude that cooperation in the area of macro-prudential policy is desirable.

References

- Ricardo J. Caballero, Emmanuel Farhi, and Pierre Olivier Gourinchas. Safe Asset Scarcity and Aggregate Demand. *American Economic Review*, 106(5):513–518, May 2016. URL <https://ideas.repec.org/a/aea/aecrev/v106y2016i5p513-18.html>.
- Marco Del Negro, Domenico Giannone, Marc P. Giannoni, and Andrea Tambalotti. Safety, Liquidity, and the Natural Rate of Interest. *Brookings Papers on Economic Activity*, 48(1 (Spring)):235–316, 2017. URL <https://ideas.repec.org/a/bin/bpeajo/v48y2017i2017-01p235-316.html>.
- Silvia Miranda-Agrippino and Hélène Rey. World Asset Markets and the Global Financial Cycle. CEPR Discussion Papers 10936, C.E.P.R. Discussion Papers, November 2015. URL <https://ideas.repec.org/p/cpr/ceprdp/10936.html>.

Previous volumes in this series

731 June 2018	The likelihood of effective lower bound events	Michal Franta
730 June 2018	U.S. monetary policy and fluctuations of international bank lending	Stefan Avdjiev and Galina Hale
729 June 2018	Has inflation targeting become less credible?	Nathan Sussman and Osnat Zohar
728 June 2018	Accumulation of foreign currency reserves and risk-taking	Rasmus Fatum and James Yetman
727 June 2018	Recent RMB policy and currency co-movements	Robert N McCauley and Chang Shu
726 June 2018	Residential investment and economic activity: evidence from the past five decades	Emanuel Kohlscheen, Aaron Mehrotra and Dubravko Mihaljek
725 May 2018	Identifying oil price shocks and their consequences: the role of expectations in the crude oil market	Takuji Fueki , Hiroka Higashi , Naoto Higashio , Jouchi Nakajima , Shinsuke Ohyama and Yoichiro Tamanyu
724 May 2018	Do small bank deposits run more than large ones? Three event studies of contagion and financial inclusion	Dante B Canlas, Johnny Noe E Ravalo and Eli M Remolona
723 May 2018	The cross-border credit channel and lending standards surveys	Andrew Filardo and Pierre Siklos
722 May 2018	The enduring link between demography and inflation	Mikael Juselius and Előd Takáts
721 May 2018	Effects of asset purchases and financial stability measures on term premia in the euro area	Richhild Moessner
720 May 2018	Could a higher inflation target enhance macroeconomic stability?	José Dorich, Nicholas Labelle St-Pierre, Vadym Lepetyuk and Rhys R. Mendes
719 May 2018	Channels of US monetary policy spillovers to international bond markets	Elias Albagli, Luis Ceballos, Sebastian Claro, and Damian Romero
718 May 2018	Breaking the trilemma: the effects of financial regulations on foreign assets	David Perez-Reyna and Mauricio Villamizar-Villegas

All volumes are available on our website www.bis.org.