

Price Transmission in Unsecured Money Market

Edoardo Rainone*

Abstract

The price of money in the interbank market is a fundamental indicator of smooth transmission of signal rates by the central bank. Public information plays an important role in this context, central banks announce their signal rate and market rates are daily published. Nevertheless, according to the relevant theoretical literature on OTC markets, private information may have a relevant role in a decentralized market. Diffusion of private information can thus generate prices that depend on the interbank network structure. In this paper we use an ad hoc (network) version of the spatial autoregressive model for assessing the presence of this mechanism in the Euro unsecured money market. A wide time span including Sovereign debt crises in the Euro area is considered. We find a more relevant role played by private information during periods dominated by strong uncertainty.

Keywords: interbank markets, money, spatial autoregressive models, trading networks.

JEL Classification Codes: E52, E40, C21, G21, D40

*Banca d'Italia. I thank Giovanni di Iasio, Marco Rocco and Francesco Vacirca for sharing data and thoughts with me, Salvatore Alonzo and Fabrizio Palmisani for giving me the time and the opportunity of investigating this topic. I thank Vincent Ang, Paolo Angelini, Jacques Fournier, Simone Giansante, Lincoln H. Groves, Luigi Infante, Péter Kondor, Fabrizio Mattesini, participants of the workshop "The interbank market and the crisis" at Banca d'Italia in Rome, participants of the 7th Irving Fisher Committee Conference at BIS in Basel, colleagues of Banca d'Italia - Financial Stability Directorate and participants of the Macro-prudential Research Network (MaRS) workshop at the ECB in Frankfurt for comments. A special thank goes to Francesco Vacirca for his pretious guidance trough unsecured money market dataset. I also thank colleagues of Banca d'Italia - Wholesale Payment Systems Division at the Payment System Directorate for useful discussions. All errors are my own responsibility. The author of this paper is member/alternate of one of the user groups with access to TARGET2 data in accordance with Article 1(2) of Decision ECB/2010/9 of 29 July 2010 on access to and use of certain TARGET2 data. Banca d'Italia and the PSSC have checked the paper against the rules for guaranteeing the confidentiality of transaction-level data imposed by the PSSC pursuant to Article 1(4) of the above mentioned issue. The views expressed in the paper are solely those of the author and do not necessarily represent the views of the Eurosystem

1 Introduction

Average rates in the unsecured money market and their volatility are key indicators for a large set of phenomena: financial tensions, market expectations and the cost of mortgages and loans to the real economy (the pass-through mechanism from market to banking rates). Some relevant market rates, like EONIA and EURIBOR in the Euro area, have a direct impact on lending and deposit rates, as shown in Gambacorta (2008) and other papers, determining the amount of households and firms' debts at variable rates. Furthermore banking rates are influenced by interest rate volatility, following the model by Ho and Saunders (1981). The mechanism investigated in this paper has relevant implications on both market rates and rates volatility, having thus indirect effects on micro and macro financial conditions of households and firms. Rates in money markets represent an important issue for central banks since uncontrolled market rates prevent a smooth rate transmission, which is one of its fundamental missions. Financial stability of the system may be threatened as well. In order to achieve this goal, central banks try to be fully conscious about all the factors impacting interbank market rates.

Prices are supposed to be mainly driven by *public information* in money markets. Central banks determine upper and lower bound for the cost of money and, collecting information from banks and publishing it, provide banks with market average rates in order to avoid information asymmetry and to smoothly transmit their signal rate.¹ Nevertheless, given the *decentralized* nature of this market, *private information* may play a relevant role as argued by a growing theoretical literature on OTC markets.

The process of trade can transmit some relevant information in a decentralized market characterized by asymmetric information (Wolinsky; 1990). The idea that prices contain information appears in Hayek (1945) and was deeply investigated by the literature on information transmission in rational expectation equilibrium (Grossman; 1981; Grossman and Stiglitz; 1980). Recently, Babus and Kondor (2013) propose a model characterized by information diffusion in OTC markets. In their model dealers have private information and each bilateral price partially aggregates the private information of other dealers, depending on the market network structure. They theoretically show how it is implied by decentralization and heterogeneous dealers' valuation on the exchanged asset. The authors also mention the fed funds market as an example. The econometric model proposed in this paper can be used to test for one of the empirical predictions of Babus and Kondor (2013) theoretical model, the latter can thus be taken as one of the possible microfoundations for our empirical specification.

This mechanism of diffusion implies that if a lender increases (decreases) her valuation about central bank money future value because of a random idiosyncratic shock, this will have an impact on prices of loans she agrees and, because of diffusion process, on prices of loans in which she is not involved. Observe that it generates an higher (lower) variation in the average price.² Coming back to the pass-through mechanism, if a shock on single price has a

¹Here we are simplifying this process. Market rates are not always published by the central bank. They may be published by international non-profit making associations. In Europe, for instance, Euribor-EBF is in charge with this task, see <http://www.euribor-ebf.eu/euribor-ebf-eu/about-us.html>. A corridor is often used to place lower and upper bounds to market rates. Bounds are determined by marginal lending and overnight deposit rates, these are set by the central bank. Other instruments can be used in order to control market rates.

²Here, the behavioral mechanism can be synthesized as follows: when a bank has to evaluate the expected price of a loan, it can be influenced by prices experienced in other loans (in addition to its own characteristics,

stronger impact on price average and variance because of transmission mechanism, it will have a stronger impact on the households and firms' debts as well. It implies that an increase in the price of a interbank loan will lead to an higher increase of the rate of loans to households and firms if a transmission mechanism is at work (*ceteris paribus*).

Moving to the empirical argument, the market rate and its variance, are the first and second moments of the rate distribution, which is composed by single rates. The rate of a loan has been usually modelled as a function of lender and borrower's characteristics and aggregate conditions. Nevertheless, the unsecured money market is known to be a *decentralized* one, thus formed by bilateral relationships. This set of interbank relationships generates a network.

Given the relational nature of these loans and following the theoretical literature on OTC markets, we want to test for a cross-sectional dependence among rates implied by private information diffusion. The network nature of this market makes this task easier since, if micro-data is available, the structure of this dependence can be exactly traced. The spatial econometrics literature has developed a large set of models to formalize this dependence and it recently focused on networks (Lee; 2007; Lee et al.; 2010; Liu and Lee; 2010). Conceptually, this cross-sectional dependence can be seen as a consequence of the process of private information diffusion in the interbank network, according to Babus and Kondor (2013).³

This paper empirically explores the informational role of prices in the Euro unsecured money market. The nature of the exchanges' network is used for exploiting the diffusion of private information. Suppose that bank *i* trades with bank *j* and bank *j* trades with bank *k*, then the prices of these two loans are connected. The diffusion of private information is measured by network-based spillover effects among connected prices. We rigorously test this hypothesis, estimate the magnitude of this effect in the Euro unsecured money market and its evolution over time. Network theory and a rearranged spatial econometric toolkit are, respectively, used to formalize the local diffusion in prices and to identify and estimate the spillover effects.

The dataset used consists of loans detected with the Furfine algorithm (with maturities from one day up to one year) implemented on Target2 data (Arciero et al.; 2013). Loans are then matched with lender and borrower characteristics.⁴ This large set of information

counterpart's characteristics and liquidity conditions of the system). Prices experienced represent the private signals coming from other banks and reflect a mixture of their expectations. Note that here we used the term "expectation". If we think about the bank's production function in the money market, it is characterized by a "lag" (the final outcome comes out at the end of a maintenance period). It naturally implies the presence of expectations about the future value of central bank money. Note also that the process of expectations' formation about prices is typically conceived as based on time-lags (Muth; 1961; Nerlove; 1958). What we are hypothesizing here, is that it may be based on network-lags.

³Rates reflect the expectation of market operators, thus a cross-sectional dependence of rates, after having controlled for counterparts characteristics and aggregate conditions, may indicate a diffusion of expectations. Single rates can be observed only by the respective counterparts, so that they represent a piece of *private information* about the cost of money, contrasting the *public information* provided by market rates, i.e. the average of rates. Each bank can see its experienced prices and the market average, thus they respectively play the role of private and public information. Other definitions of private information can be conceived. Given that price is the outcome of interest here, this specification seems to be the most appropriate.

⁴Furfine algorithm is used to detect loans from a set of payments. By definition a loan consists of two payments, the first equal to l and the second equal to $l(1 + i)$, where i is the interest rate. The algorithm matches those two legs, see Furfine (1999) for more details. The procedure is described in Arciero et al. (2013). See Armantier and Copeland (2012) for an assessment of the quality of Furfine-based algorithms. Target2 is the European RTGS Payment System. Banks characteristics come from Bankscope.

allows us to distinguish a price variation due to a change in bank's economic outlook from one generated by an impulse coming from *connected* prices. We consider a wide time period, as it enables us to study also time series of spillover intensity.

Summing up, the main contribution of this paper is to examine a novel banks' behavioral mechanism and to test for it. This suggests a different perspective from which money market dynamics can be studied and provides a new tool for measuring market tensions. It translates into an additional explicative variable when price is modeled. A consistent methodology for estimating this (endogenous) variable is proposed, using a an *ad hoc* spatial autoregressive model.

The main empirical findings are the following: (i) information diffusion is relevant only when there are market tensions and high uncertainty, (ii) diffusion flows in multiple directions through the interbank network, lenders are influenced by the price they experience as borrowers and borrowers are influenced by the price they experience as lenders.

The rest of the paper is organized as follows. Section 2 outline the link between the conceptual framework and the econometric setup, Section 3 provides preliminary evidence and the basic ingredients of the analytical framework. Section 4 describes the econometric model and discusses the issues related to the consistent estimation of the spillover effects. Section 5 presents the results of the application of the econometric model on the Euro unsecured money market estimated by the application of Furfine algorithm on Target2 data. Section 6 discusses the transmission mechanism, Section 7 concludes.

2 Conceptual Framework and Econometric setup

Suppose that the market is composed by n banks that trade bilaterally an asset (central bank money) and they are uncertain about its market value.⁵ Assume that each bank receives a private signal about the value, it implies that the information on the price of a unit of money, I , can be split in two components for each bank i , I_M and I_i , respectively *public* and *private* information. Note that this setting is the same of Babus and Kondor (2013), thus we can set bank i 's valuation as $\theta_i = \bar{\theta} + \eta_i$, where $\bar{\theta}$ is the common component which represents *public* information while η_i is the individual one which reflects *private* information. It implicitly implies that there is heterogeneity in banks' valuation. As an example, we can have that $\bar{\theta} = n(\bar{p}_{K \in K}; \psi)$, where K is a set of lags and ψ is a set of parameters, it implies that the public component is a function of market rates observed in the past. As an alternative, we can suppose that the term structure of interest rates is used for computing $\bar{\theta} = b(\bar{p}^m, m \in M; \iota)$, where M is a set of maturities and ι is a set of parameters (Alonzo et al.; 1994; Shiller and McCulloch; 1987). Observe that we can assume that both are considered in $\bar{\theta}$.⁶

Bilateral trading and heterogeneity in valuations imply price dispersion and transmission of information. According with Babus and Kondor (2013), each price thus partially incorporates private signals of market participants. It also implies that if agent j trades with agent k then p_{jk} may affect p_{ij} . Indeed, the residual inverse demand function of dealer i in a transaction

⁵Note that, given that bank's production function in the money market is characterized by a "lag" (the final outcome realizes at the end of a maintenance period), it naturally implies the presence of valuations about the value of central bank money.

⁶Note that we are assuming separability, thus each bank elaborates in the same way the common information available. This assumption can be relaxed, but here is useful for the sake of simplicity.

with dealer j in their model is a function of other prices.⁷

Suppose now that the price of a loan which has b as a borrower and l as a lender is also a function of lender and borrower characteristics. We thus have $p_{bl} = f(c_{bl}(P), x_b, x_l, E_{bl}, \chi)$, where χ is a set of parameters, E_{bl} is a random component, P is a vector containing all the prices in the market, $c_{bl}(\cdot)$ is a loan-specific function which includes prices that are *connected* with p_{bl} , x_b and x_l are borrower and lender characteristics respectively. If we assume linearity we thus have that $p_{bl} = \alpha + \beta c_{bl}(P) + \gamma x_b + \mu x_l + E_{bl}$, with $\chi = (\alpha, \beta, \gamma, \mu)$.

In other words, each price starts from a "baseline" price, α , determined by market-wide expectations (which captures θ , the common component which represents *public* information), then spreads depending on counterparts' characteristic (x_b, x_l) are added (for instance a risky borrower should be priced accordingly to its probability of default) and finally a set of other prices ($c_{bl}(P)$) play a role in determining the agreed (observed) price, capturing the diffusion of private information via prices.

Observe that, according to this specification, if only public information matters, i.e. $\theta_i = \bar{\theta}$, the price equation reduces to $p_{bl} = \alpha + \gamma x_b + \mu x_l + E_{bl}$, thus a formal test for the presence and diffusion of private information consists in estimating the full model and checking whether we would reject the null $\beta = 0$. If private information matters, i.e. $\eta_i \neq 0$, β will be significantly different from zero.

3 Preliminary Evidence

Price volatility in the Euro unsecured money market (hereafter UMM) estimated by Furfine algorithm shows significant time-variation. Panel (a) of Figure 1 depicts the variance of price across loans with maturities from overnight to three days agreed in each maintenance period. We can see that it remarkably increased after Lehman, first and second Sovereign Crises (hereafter FC and SC), and drastically decreased after ECB intervention by 2011 LTRO.⁸ During these crises the credit default swap of hit countries dramatically increased, the default risk of banks belonging those countries increased as well. It produced big uncertainty in the interbank money market. Furthermore, the expectations about the reaction of ECB dispersed until the LTRO took place, generating an additional source of uncertainty in the interbank money market. If we take two maintenance periods, the first from 2010-01-20 to 2010-02-09 (before FC) and the second from 2011-07-13 to 2011-08-09 (after SC), we can see from panel (b) of Figure 1 that the density changes dramatically. The price dispersion has notably increased in the second period.

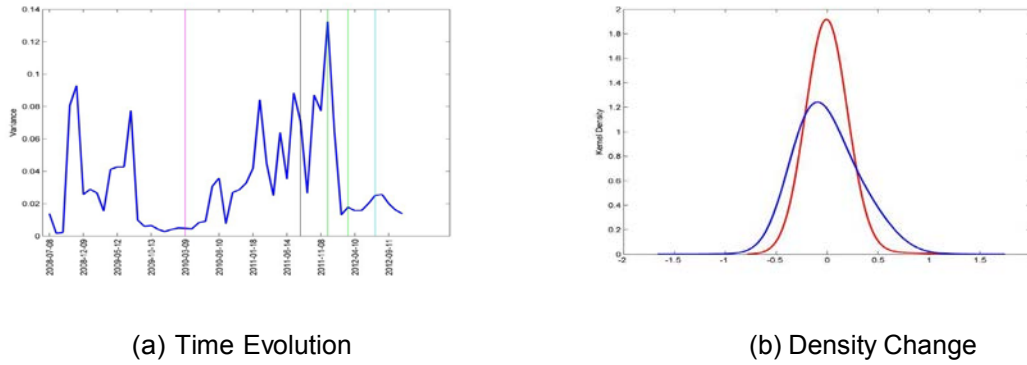
The main reason behind this change is the generalized increase in perceived risk by treasurers. An additional source of variation might be the propagation of changes in agents' expectations. Agents show updated expectations by changing their reference prices, thus sending signals to other agents. If this mechanism is at work, we should see an higher variance for *connected* prices during *hot periods* since they are contracts characterized by agents which receive more signals.⁹ Panel (a) of Figure 2 shows the variance computed for *connected* and *unconnected* prices, the variance among connected prices is usually higher than the one computed

⁷They also show that p_{ij} can be represented as a function of posterior beliefs of i and j , which in turn are shaped by prices privately observed by i and j .

⁸The first Sovereign crises was in April 2010 and hit Ireland, Greece and Portugal, while the second Sovereign crises was in August 2011 and hit Italy and Spain.

⁹A price of a loan is *connected* whether it has its borrower or lender shared with other loans.

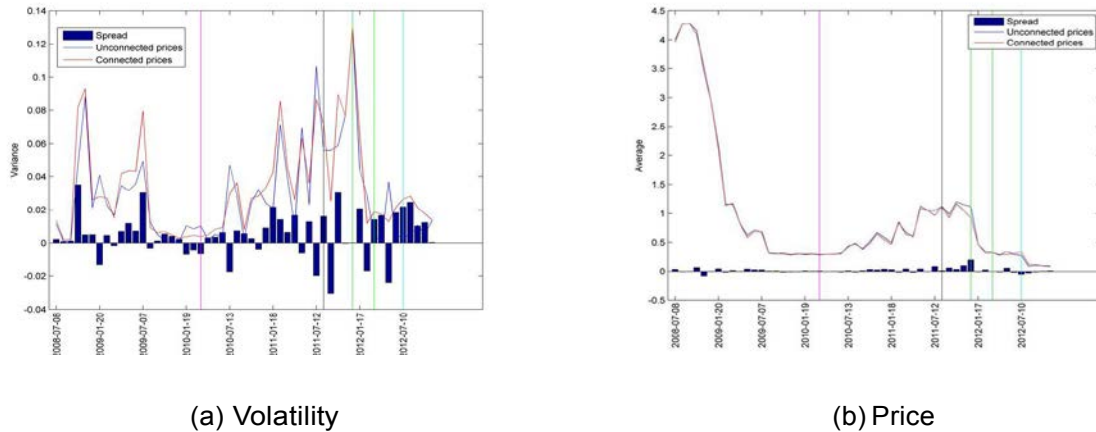
Figure 1: Price Variance.



Panel (a): violet vertical line traces first Sovereign crises, black vertical line traces second Sovereign crises, green lines trace LTROs and azure line traces signal rate change in July 2012. Maintenance periods are considered. Panel (b): kernel density of prices centered to zero. Bandwidth = 0.2, kernel = Normal. Red line: distribution of prices during the maintenance period from 2010-01-20 to 2010-02-09, blue line: distribution of prices during the maintenance period from 2011-07-13 to 2011-08-09.

for unconnected (it happens roughly 80 percent of total observations), apparently confirming the intuition. Connectedness can also act as a valid support for searching (and even finding) lower prices, panel (b) of Figure 2 depicts the average price for the two subsamples previously defined. It highlights that connected prices are on average lower than unconnected ones, the spread starts to be significant after the FC and approaches to zero after 2011 LTRO.¹⁰ The rest of the paper is based on the subsample of connected price.

Figure 2: Connected vs Unconnected Spreads



Violet vertical line traces first Sovereign crises, black vertical line traces second Sovereign crises, green lines trace LTROs and azure line traces signal rate change in July 2012.

The question does the prices' volatility have a network nature? In other words: is it likely that "neighbors" prices are more similar? Or from a distributional perspective: If we

¹⁰From Figure 2 we can also observe a sharp decrease of interbank rates after 2011 LTRO. Bech and Klee (2011) develop a model to explain this phenomenon.

draw two similar prices how likely is that they are neighbors? Here the main idea is that the prices' positions in the money market network may be relevant in explaining the aggregate dispersion, consequently the experienced prices influence the bargained price of a contract. This price is couple-specific to the banks, and represents a deviation from the average market rate that is a common piece of information available to everyone because it is published daily in the European market. Suppose that an idiosyncratic shock strikes a bank, given the network nature of these exchanges -if this mechanism is found to take place- we should observe a propagation of this shock through the network. Testing for this mechanism may be quite important for understanding the money market dynamics and correctly interpreting its evolution over time.

3.1 Payment System Data and Furfine Algorithm

The data used in this paper come from Target2 (hereafter T2), the European RTGS (Real Time Gross Settlement) Payment System.¹¹ T2 allows banks operating in European central bank money (hereafter ECBM) to settle large value payments on their accounts. The reserve requirement (hereafter RR) is managed on these accounts too, so participating banks have to exchange money in T2 for accomplishing RR.¹² The Market for ECBM is thus generated by RR and has T2 as a designed support. Several types of markets settle in T2, according to their nature. The main sources of liquidity for a bank are basically three: central bank, secured money market, and UMM.¹³ The focus of this paper is on the third source. The UMM transactions can be settled basically in two ways. First, through Ancillary Systems,¹⁴ which make easy to detect loans among banks. Second, the two legs (the loan and its pay back) can be freely sent through T2 without labeling. In the second scenario UMM is confounded with other types of payments, making more challenging to identify loans. Furfine (1999) argued that matching these two legs is a way for identifying them. Arciero et al. (2013) applied this criterion on payments settled in T2, augmenting the maturity spectrum up to one year.¹⁵ The starting point of this paper is consequently the Money Market Database generated by Arciero et al. (2013) where information about prices of unsecured ECBM loans are provided for maturities from overnight up to one year. The time span considered here is from June

¹¹For more information about Target2 see <http://www.ecb.europa.eu/paym/t2/html/index.en.html>.

¹²Many types of payments are actually settled in T2, here a short list: Customer Payments, Securities Systems Payments, Open Market Operations, Treasury Bonds issues. This should give an idea of the importance of this system and its centrality in a bank's liquidity management perspective.

¹³Of course the list can be largely expanded, intra-group transfers are an example. Here I will not deepen this argument since is out of the scope of this paper.

¹⁴An Ancillary System is connected and send payments instructions to T2, operating upon banks' accounts. Payments coming from an Ancillary System can be labelled and isolated. e-MID is an example of ancillary system.

¹⁵Their paper contains detailed information about the algorithm and its practical implementation in T2. I will not deepen the algorithm's details since is out of paper's scope. In Arciero et al. (2013) the database is based on settler banks, since final agents information was not available at that time. The 3CB recently made this information available and then let the same authors run the algorithm with this new information and make it possible to have the database used in this analysis. 3CB are the three central banks, Banca d'Italia, Banque de France and Deutsche Bundesbank, which provide T2 as a service. I am grateful to both Arciero et al. (2013) and 3CB for providing this essential information, making this paper and a wider investigation possible.

2008 to the end of 2012.¹⁶ The very basic time unit considered here is the maintenance period (hereafter MP),¹⁷ it has at least two big advantages compared with other choices. Firstly an economical and statistical reason, banks are constrained to have an average amount of ECBM in their T2 account taking MP as time interval, thus it makes MP as a natural candidate for money market analysis. Statistically it makes comparable different MPs. Hamilton (1996) and Prati et al. (2003) showed that days are not comparable since the position of day in MP makes the market conditions completely different depending on its distance to the end of MP. The second, more operational, reason is its practicality when considering a large time interval.

3.2 Network of Prices

Suppose that bank i trades with bank j and bank j trades with bank k , we want to address the following question: to what extent does the price of the loan of bank i to bank j affect the price of the loan of bank j to bank k (Figure 3)?

Figure 3: Connection between two prices



In order to answer it, it is useful to move from the *banks' network* to the *prices' network*, in order to verify if a spillover exists. In network analysis the units are usually the nodes and the spillover is measured considering the adjacency matrix,¹⁸ here we have substantially inverted the role of this two sets of elements, the units being the arcs (the adjacency entries) and the spillover measured through an *arcs' adjacency* where nodes have the role of connectors among arcs. More formally let C be the set of active banks in the UMM, for the sake of simplicity suppose it is referred to a specific maturity m and time t , two banks are connected if a loan of maturity m is agreed at time t . Let P be the matrix which keeps track of these connections, where the element p_{ij} is equal to the price of the loan if bank j lending to bank i , where $i, j \in C$, zero otherwise.¹⁹ Note that it is a directed weighted adjacency matrix among banks. Following the criterion specified above two prices, $p_o = p_{ij}$ and $p_q = p_{lk}$, are connected if $i = k$, in other words if the borrower of o coincides with the lender of q . In this way the connections among prices can be traced with a *arcs' adjacency matrix* A , where the element a_{qo} is equal to one if price o influences price q , zero otherwise. Observe that this criterion of connectivity is set by the econometrician and is a subjective choice.

3.3 Assessing Network's Role

For a preliminary response to our main questions, Moran's I, a popular index in Economic Geography, can be helpful. This statistic is commonly used to assess whether adjacent units

¹⁶T2 starting date was 19 November 2008. The analysis is limited to the end of 2012. The database is up to date so that the analysis can be updated.

¹⁷See <http://www.ecb.europa.eu/home/glossary/html/act4m.en.html#226> for details.

¹⁸The adjacency matrix keeps track of connections among nodes, it represents a graph in a matrix form.

¹⁹Given that MP is considered as time interval, the average price of loans from i to j is considered in this analysis.

are more likely to be similar (Moran; 1950). In spatial analysis this test is used to find a preliminary evidence of spillover among units for a certain economic outcome and to check

residuals' spatial-correlation after a regression analysis. Here we consider a maximum distance of 10 in order to assess the length of the radius for a possible spillover.²¹ We computed the statistic for five ranges of maturities: (i) from one to three days, (ii) from four to ten days, (iii) from eleven days to one month, (iv) from one month to three months and (v) from three months to one year. For the maturities from one to three days (Figure 4) the network transmission of prices doesn't seem to be constant over time, Moran's I is particularly high in two *hot periods*, the second quarter of 2010 and the third quarter of 2011. One can note that these two periods coincide with the peaks of market tensions deriving from the strong increase of Sovereigns' spreads. In 2011 the index reaches its maximum. Moran's I decreases with the distance among prices, it is typical in a process of diffusion, but for some periods it doesn't converge to zero when the distance increases.²² Anselin (1996) interpreted Moran's I as a regression coefficient in a regression of $A_{m,t}^d P_{m,t}$ on $P_{m,t}$, but it must be noted that Moran's I is not a consistent estimator of spillover effects, consequently it can't be stated that the transmission in prices network in the third quarter of 2011 is higher than the one in the second quarter of 2010, it simply tests the existence of spillover effects. In order to estimate the magnitude of the latter we need to employ a different approach. Note also that a price depends on lender and borrowers characteristics, if an assortative (dissortative) matching takes place in UMM the statistical significance of Moran's I may be driven by banks covariates.²³

The focus has been on maturities from overnight to three days so far. Given the augmentation of maturities in Arciero et al. (2013) we can split loans in several maturities' intervals. Another interesting point is that the Moran's I is less likely to be significantly different from zero as the maturity increases (Figure 5). As we can see the index signals an high network-correlation up to one month maturities. The period between FC and SC seems to be the more

²⁰A distance equal to one means that the two loans share the lender or the borrower (they are directly connected), a distance equal to two means that the two loans are connected through another one (they are indirectly connected), and so on. Row normalization consists in dividing each element of the adjacency matrix by its row sum.

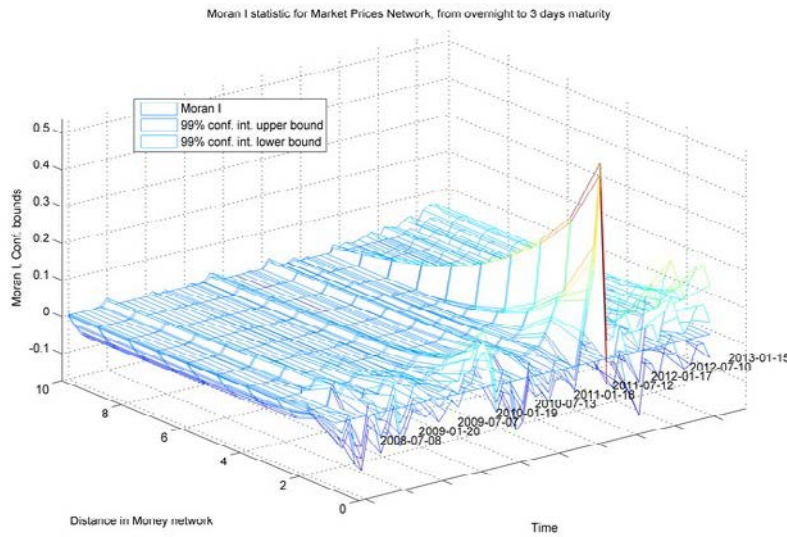
$$a_{ij}$$

²¹It operationally means that we set to 10 the maximum length of a path in the network. Increasing the maximum distance does not provide additional information.

²²This may indicate the presence of cycles in chains of loans.

²³If assortative matching is at work, banks which are similar to each other tend to connect; dissortative means exactly the contrary. If banks connected with an assortative matching during FC and SC and the price was a function of the same characteristics that drive the link formation process, the higher Moran's I would just reflect this change in matching process.

Figure 4: Moran's I Statistic for maturities from one to three days, computed for distances from 1 to 10.



interested by high price transmission for maturities from four days to one month. Maturities longer than one month seem to be less impacted by price transmission, even though maturities from one to three months seem to be impacted during the SC and maturities over three months during the FC. From this preliminary evidence it seems that short maturities' prices are more sensitive to the network nature of the market while for long ones the bargained prices do not depend strongly on their neighbors. Standard errors are larger for maturities longer than three days, the reason why is that the relative networks are much sparser, highlighting a thin market. The low market thickness and consequently network density precludes a robust estimation of price transmission as well, paths longer than length 2 are few and, as we will see in the next section, sound instrumental variables are difficult to find. This is the reason why we will mainly focus on short maturities (up to three days) in this paper.²⁴

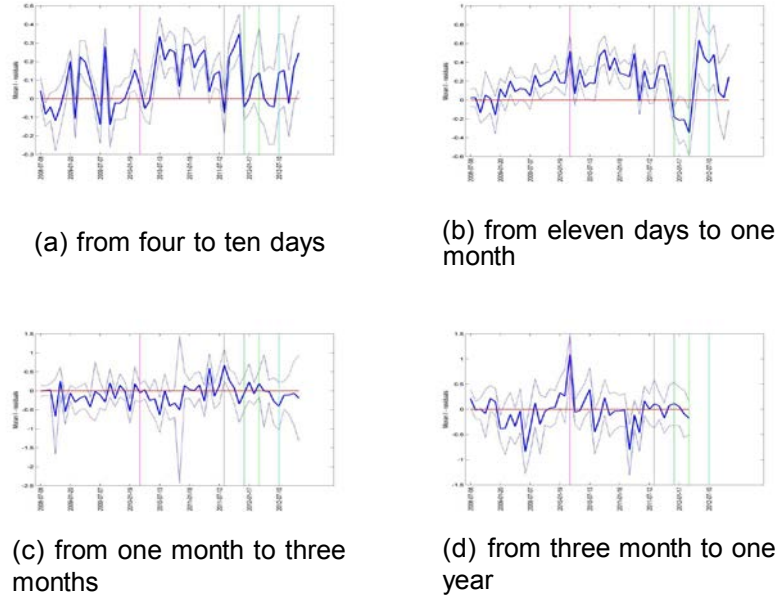
4 Econometric Model

As stated before, Moran's I offers evidence of spillover effects, but this index can't account for the matching process and the omitted variables problem. Furthermore it is not a consistent estimator of spillover effects, and, for this reason, we have to deal with these issues using different tools.

In this framework the basic unit is the price of a contract, as explained in Section 3.2. Modeling outcomes of arcs instead of outcomes of nodes is not common in the network and spatial econometric literature. Here the switch is useful since we are not interested in a node specific characteristic, prices are bilateral by definition, so that they are *couple-specific*. This makes difficult to think about an outcome that is *node-specific*, the best way of measuring

²⁴The network sparseness can be mitigated by enlarging the number of banks for which covariates are available. Efforts along this way are still an object of our interest.

Figure 5: Moran's I Statistic for longer maturities, computed for distances 1.



Violet vertical line traces first Sovereign crises, black vertical line traces second Sovereign crises, green lines trace LTROs and azure line traces signal rate change in July 2012.

network transmission seems to take arcs (prices) as basic unit.

Martinez and Leon (2014) take the weighted average price (as a borrower) as outcome of a node and the row-normalized matrix of exchanged volumes as network which spillover passes through. This approach may be problematic because of an in-built correlation induced between the outcome and its spatial lag. Preventing this issue requires one to take prices (arcs) as the unit of analysis and consider their adjacency matrix.

4.1 Including Banks' Characteristics

If banks' characteristics should be the main driver of loan's price deviation from the public signal (EONIA), as shown in Angelini et al. (2011) and Afonso et al. (2011), then it is important to include them when explaining the price variations among different loans. Furthermore, if the matching process between lender and borrower is driven by those characteristics, the interaction of these two factors may create an *apparent* network transmission of prices driven by omitted variables. Controlling for banks' covariates is fundamental in assessing the presence and magnitude of spillover in prices. For instance we can find an high network correlation among prices, looking at Moran's I statistic, simply because similar banks are used to lend each other, cleaning up this source of variation is necessary to understand whether a price's deviation is purely influenced by adjacent prices' deviations from the average market price. Suppose we want to estimate the effect of adjacent prices on price, in matrix form we have

$$\bar{P}_{m,t} = \alpha_{m,t}I + \varphi_{m,t}A_{m,t}\bar{P}_{m,t} + E_{m,t}^* \quad (2)$$

where $\bar{P}_{m,t} = \text{vec}(P_{m,t}) \times I(\text{vec}(P_{m,t}) \neq 0)$ is the vector of connected prices, $A_{m,t}$ is the row-normalized prices' adjacency matrix and $E_{m,t}^*$ is the error component, $\alpha_{m,t}$ is a constant and I

is a $N_{m,t}$ vector of ones, all evaluated for maturity m at time t .²⁵ The term $\alpha_{m,t}$ captures the general market conditions for maturity m at time t . If lender and borrower's characteristics matter in price determination, suppose linearly, the OLS estimate of $\varphi_{m,t}$ may be not consistent because of omitting variables problem, given the elements included in the error term. If $[x_{b,m,t}, x_{l,m,t}]$ is correlated with $\sum_{q=1} a_{oq,m,t} p_{q,m,t}$ inconsistency occurs, note that in this framework it is always true since two prices are neighbors if the borrower of one coincides with the lender of the other. The bias is evidently different from zero if $\text{corr}(a_{oq,m,t}, x_{b,m,t}) \neq 0$ or $\text{corr}(a_{oq,m,t}, x_{l,m,t}) \neq 0$, it occurs if $a_{oq,m,t} = f(x_{b,m,t}, x_{l,m,t})$ and $f(\cdot)$ allows for such correlation. In other words, if the link formation process is driven by banks characteristics, then bias is non-zero, which demonstrate the necessity of including covariates in this framework. We include this information with data available from Bankscope, balance sheet variables and country dummies are considered here. The econometric model expressed in matrix form is thus the following

$$\bar{P}_{m,t} = \alpha_{m,t}I + \varphi_{m,t}A_{m,t}\bar{P}_{m,t} + \beta_{B,m,t}X_{B,m,t} + \beta_{L,m,t}X_{L,m,t} + E_{m,t}, \quad (6)$$

where $X_{B,m,t}$ and $X_{L,m,t}$ are two $N_{m,t} \times K$ matrices collecting respectively the lenders and borrowers' characteristics for each loan observed,²⁶ $E_{m,t}$ is an error term i.i.d normally distributed with zero mean and variance $\sigma_{u_{m,t}}$. Observe that equation (6) is basically one of the possible empirical counterparts of the price equation outlined in Section 2.²⁷

4.2 Accounting for Endogeneity

Another issue occurs when we want to estimate equation (6), the simultaneity. If each price depends on the others, simultaneity characterizes the set of individual equations. In this context we have to account for possible endogeneity of $A_{m,t}\bar{P}_{m,t}$, as usual in network models, see Lee et al. (2010), Kelejian and Prucha (2004) and Kelejian and Prucha (1998) for a detailed discussion. This step is a fundamental one, because we can be completely misled by

²⁵Row normalizing $A_{m,t}$ means that we are looking at the effect of the average neighbor prices. It evidently makes more sense than considering the non row-normalized adjacency matrix in this context, because the latter produces a sum (instead of an average) of neighbor prices and it is not a meaningful statistic for price setting.

²⁶Note that in this framework a bank can be represented many times in both these two matrices, depending on its activity in the UMM.

²⁷Here we set $c_i(p_{t-l}, l \in L) = A_o P$

OLS estimation if it is inconsistent. The simultaneity of equations in model (6) creates an intrinsic endogeneity likelihood if

$$E[(A_{m,t}\bar{P}_{m,t})'E_{m,t}] = E[(A_{m,t}(I - \varphi_{m,t}A_{m,t})^{-1}(\alpha_{m,t}I + \beta_B X_{B,m,t} + \beta_L X_{L,m,t} + E_{m,t}))'E_{m,t}] \neq 0,$$

since from the reduced form of equation (6) we have

$$\bar{P}_{m,t} = (I - \varphi_{m,t}A_{m,t})^{-1}(\alpha_{m,t}I + \beta_B X_{B,m,t} + \beta_L X_{L,m,t} + E_{m,t}).$$

The last inequality holds if

$$E[(A_{m,t}(I - \varphi_{m,t}A_{m,t})^{-1}E_{m,t})'E_{m,t}] = \sigma_{u,m,t}^2 \text{tr}(A_{m,t}(I - \varphi_{m,t}A_{m,t})^{-1}) \neq 0.$$

Note that endogeneity is basically determined by the structure of the observed network, represented by $A_{m,t}$. The literature of network econometrics deeply investigated several methods to treat the endogeneity created by these simultaneous equations, Kelejian and Prucha (1999) and Liu and Lee (2010) propose a GMM approach, Lee (2004) used a Quasi-Maximum Likelihood Estimator. In this paper we use an instrumental variable approach, following Lee et al. (2010), Lee (2007) and Kelejian and Prucha (1998), the IVs are substantially "network embedded", in other words the network topology is used to create IVs which are correlated with the variables to be instrumented, being independent from the error term.²⁸ The expected value of the endogenous variable, $E(A_{m,t}\bar{P}_{m,t})$, meets these two conditions. Taking advantage of the reduced form, the theoretical best IV is thus derived as

$$TIV_{m,t} = E(A_{m,t}\bar{P}_{m,t}) = E[A_{m,t}(I - \varphi_{m,t}A_{m,t})^{-1}(\alpha_{m,t}I + \beta_B X_{B,m,t} + \beta_L X_{L,m,t})], \quad (7)$$

since $E((I - \varphi_{m,t}A_{m,t})^{-1}E_{m,t}) = 0$. Given that the parameters in equation (7) are unknown, $TIV_{m,t}$ is unfeasible. Assuming $|\varphi_{m,t}| < 1$,²⁹ the term $(I - \varphi_{m,t}A_{m,t})^{-1}$ is an infinite sum of elements $\sum_{k=0}^{\infty} \varphi_{m,t}^k A_{m,t}^k$. A linear approximation of vectors appearing in equation (7) can thus be used for the empirical IV, in practice we use a second order approximation

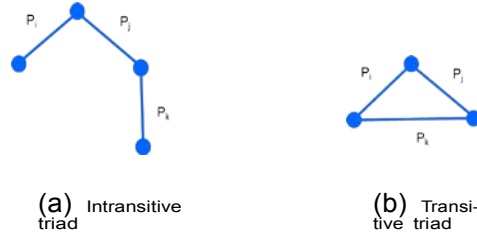
$$EIV_{m,t} = E[A_{m,t}[X_{B,m,t}, X_{L,m,t}], A_{m,t}^2[X_{B,m,t}, X_{L,m,t}]]. \quad (8)$$

Identification is guaranteed if $(A_{m,t}\bar{P}_{m,t}, I, X_{B,m,t}, X_{L,m,t})$ has full column rank, it can be shown that if $(I, X_{B,m,t}, X_{L,m,t})$ has full column rank and $I_{m,t}$, $A_{m,t}$ and $A_{m,t}^2$ are linear independent this condition is met (Bramoullé et al.; 2009). In other words, the network must not be composed by transitive triads. A transitive triad is composed by three loans, say i , j and k , which are fully connected. Each loan is connected with the other two. If a network is composed only by transitive triads (Figure 6, panel (b)), then $I_{m,t}$, $A_{m,t}$ and $A_{m,t}^2$ are linear dependent. The intuition is as follows, if we use the exogenous characteristics of loan k as an instrument for the price of loan j , when the price of loan i is the dependent variable, we have no exclusion restriction if loan k is connected with loan i . The interbank unsecured money market network meets this condition in almost every maintenance period considered in this analysis.

²⁸2SLS estimation is faster and, consequently, more convenient when a multiple repeated cross section data is analyzed.

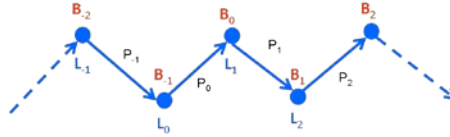
²⁹This is a necessary condition for the invertibility of $(I - \varphi_{m,t}A_{m,t})$, it also determines the parameter space for spillover effects.

Figure 6: Network structure and identification



In this context, which has arcs as units and nodes as connectors, we are constrained to use only a *one side* IV because of collinearity issues. Let us make a simple example, suppose we want to evaluate the effect of p_1 on p_2 in Figure 7. We can't use $[B_0, L_0]$, where L_0 are the characteristics of lender and B_0 are the characteristics of borrower of loan with price p_0 as IV, because $B_0 = L_1$ and it implies a not full rank matrix of instruments. Consequently only L_0, L_1, \dots can be used in the *IV chain*, which is thus extended only on the lender side, when the optimal IV is approximated.

Figure 7: Instrumental variables' chain



Consequently the applied IV in this context is the following

$$AIV_{m,t} = E[A_{m,t}X_{L,m,t}, A_{m,t}^2X_{L,m,t}]. \quad (9)$$

Note that this approach must be used in every application in which flows or interactions between nodes are modeled including spillover effects and nodes characteristics. The estimation of parameters using this approach is consequently

$$\hat{\theta}_{m,t,2SLS} = (Z'P_QZ)^{-1}(Z'P_QY), \quad (10)$$

where $Z = [I, A_{m,t}, \bar{P}_{m,t}, X_{B,m,t}, X_{L,m,t}]$, $P_Q = Q(Q'Q)^{-1}Q'$, $Q = [I, AIV_{m,t}, X_{B,m,t}, X_{L,m,t}]$ and $\hat{\theta}_{m,t,2SLS} = [\hat{\alpha}_{m,t,2SLS}, \hat{\varphi}_{m,t,2SLS}, \hat{\beta}_{B,m,t,2SLS}, \hat{\beta}_{L,m,t,2SLS}]$.

5 Empirical Analysis

Given the wide time span and the large volume of trades, we can estimate a regression for each time (maintenance period) and evaluate all the parameters for each time observation, being

able to keep track of time patterns in spillover effects. In this section we will focus on overnight to three days maturities.³⁰ In the empirical analysis both OLS and 2SLS are performed for each time observation (MP). The OLS estimate of $\varphi_{m,t}$ in model (6) are reported in the first row panels of Figure 8, while 2SLS estimate are plotted in the second row. The baseline model is estimated in the first column-panels, model (6) is augmented with the lender network-lag (i.e. $AX_{L,m,t}$) in the second column-panels.³¹

The characteristics included in the model are the balance sheet variables and country dummies. *Total assets* expressed in millions of Euros captures the dimension of each bank. Balance sheet items are included as percentages of total assets. On the asset side *Loans*, *Fixed Assets* and *Non-Earning Assets* are included.³² On the liabilities side *Deposits* and *Short term funding*, *Other interest bearing liabilities*, *Other Reserves* and *Equity* are included.³³ Country dummies are included as well: Italy, France, Spain, Netherlands, Greece, Ireland, United Kingdom, Austria, Portugal, Luxembourg, Cyprus, Switzerland, Finland and Belgium have a specific dummy. Other European countries are grouped in one dummy as well as US, Japan and other non European countries. Results of the empirical analysis are represented in Figure (8).

The first emerging evidence is that the price transmission is not constant through the time span considered, and estimates of $\varphi_{m,t}$ are not significantly different from zero for each MP considered (panel (c) and (d) of Figure 8). Price transmission becomes relevant after the big crises that characterize the time interval, i.e. the FC and SC. The higher risk perceived by treasuries after these macro shocks seemed to increase attention to market signals and price transmission as well.

The second interesting point is that the estimation results using a 2SLS estimation with $AI V_{m,t}$ as instrument do not change drastically qualitative conclusions derived from the OLS estimation, in fact $\hat{\varphi}_{m,t,OLS}$ and $\hat{\varphi}_{m,t,2SLS}$ are quite similar as can be noticed from panel (a)-(d) of Figure 8, even if point estimates are different and OLS shows a small bias. The closeness between OLS and 2SLS is due to the particular topology of the UMM network, as stated before the endogeneity problem is generated by the observed network's topology. In particular it is generated by *circularity*, Figure 9 shows a simple example of it. More specifically, the higher is the number of *cycles* in the network the higher is the circularity, the more relevant is the endogeneity issue.

As we can see in the third row-panels of Figure 8, where the time series of $tr(A_{m,t}(I - \hat{\varphi}_{m,t,2SLS}A_{m,t})^{-1})$ and $\hat{\alpha}_{m,t,2SLS}^2 tr(A_{m,t}(I - \hat{\varphi}_{m,t,2SLS}A_{m,t})^{-1})$ are plotted, the level of circularity is quite low in the Unsecured Money Market (see Figure 9), consequently the OLS bias is not huge in most of the cases.

Another interesting aspect is that the sparseness of UMM network after the LTROs gen-

³⁰As mentioned before, we can potentially analyze several maturities. The reason behind this choice is that the number of loans is very sparse for maturities higher than one week in time interval under analysis. The small sample size may lead to bad inference.

³¹In this model the set of instrument is augmented as well $AI V_{m,t} = E[A_{m,t}X_{L,m,t}, A_{m,t}^2X_{L,m,t}, A_{m,t}^3X_{L,m,t}]$

³²*Other Earning Assets* are dropped because of collinearity.

³³*Loan Loss Reserves* and *Other (Non-Interest bearing)* are dropped.

erates a very large increase in estimated standard errors for both OLS and 2SLS, thus price transmission assessment after April 2012 is not reliable.

The last interesting fact is that including the lender's characteristics of the *influencing* loan (i.e. $AX_{L,m,t}$) is important in order to better fit the data, in fact the *generalized* R^2 (plotted in the last row of Figure 8) is strictly preferable for the augmented model.³⁵ In the fourth panel of Figure 8 Moran's I is computed for the residuals of 2SLS estimators, excluding $AX_{L,m,t}$ brings to a strong network-correlation in residuals, while including it brings to an extremely frequent rejection of residual network-correlation.³⁶ Note also that including $AX_{L,m,t}$ brings to an higher estimated price transmission.

6 Mechanism of Diffusion and Market Rate

The presence of price transmission in the unsecured money market has an impact on the market rate and its volatility, which in turn has an effect on banking rates. It seems worthy to provide an example of the implications that this mechanism has on the market rate. Suppose that there are four banks and three loans in the unsecured money market and they do not change over time (Figure 10). Let $\Delta p > 0$ be an idiosyncratic exogenous shock, and $p_{ji} = p_{kj} = p_{gk} = p^* = \text{EONIA}$ are the prices before the shock.³⁷ Suppose Δp hits p_{ji} , without price transmission the new EONIA will be

$$p^{**} = \frac{3p^* + \Delta p}{3},$$

with price transmission the new EONIA will be

$$p^{***} = \frac{3p^* + (1 + \varphi + \varphi^2)\Delta p}{3} > p^{**}, \text{ if } \varphi > 0.$$

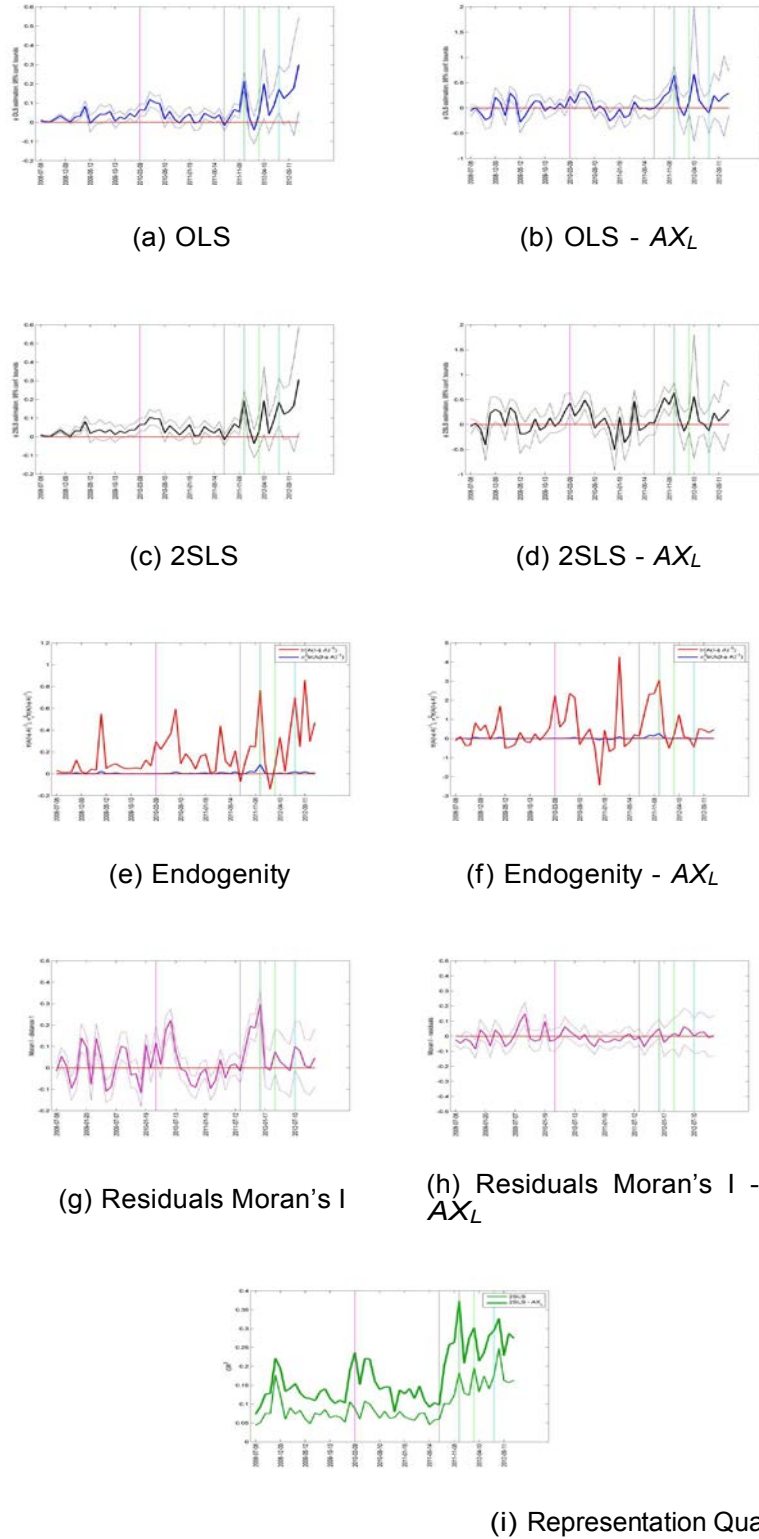
The difference between p^{***} and p^{**} ($\frac{(\varphi + \varphi^2)\Delta p}{3}$) is generated by the transmission mechanism, which brings the EONIA to an higher level after a positive shock received by a single loan. The propagation of this shock (Δp) depends on the structure of the interbank network and on a *multiplier* φ . This parameter, according to our econometric model, is constrained to be less than one in absolute value. It implies that the initial shock has a decaying effect on other loans when the distance in the network increases ($\varphi > \varphi^2 > \varphi^3 > \dots$). A similar argument can be made for the effect of the transmission mechanism on prices' volatility. Observe also that, given that the final effect of a shock depends on where it hits the interbank network, if a shock hits a *central* loan, it would have a higher impact on market rates with respect of a *peripheral* loan. This example highlights the effect that the presence of this mechanism of diffusion has on market rates and the relevant role it may play when shocks occur.

³⁵Since we are evaluating the fitting quality of 2SLS a *generalized* R^2 is used, see Pesaran and Smith (1994) for more details.

³⁶Some MPs are characterized by network-correlation of residuals, this may be caused by the omission of some unobservable bank characteristic. The small entity of the problem doesn't erode the robustness of results. Inclusion of unobservable factors is an objective of future research.

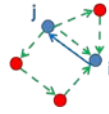
³⁷Let us assume that all the banks are in the EONIA panel. Observe that a change in signal rate by the central bank would not imply this mechanism of diffusion because it has an impact on all the rates, the following holds only for the propagation of a shock hitting a single loan.

Figure 8: 2SLS and OLS estimation of $\phi_{m,t}$, m = overnight to three days maturities



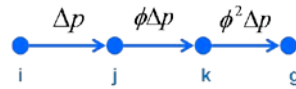
Dashed lines represent 95 percent confidence intervals. Violet vertical line traces first Sovereign crises, black vertical line traces second Sovereign crises, green lines trace LTROs and azure line traces signal rate change in July 2012. Third-row panels represent the estimated $tr(A(I - \phi A)^{-1})$ and $\sigma^2 tr(A(I - \phi A)^{-1})$ which measure the endogeneity issue in observed network. Generalized R^2 is used for evaluating representation quality.

Figure 9: An Example of Network Circularity.



In this example the level of circularity between i and j is high.

Figure 10: Chain of loans



7 Concluding Remarks

The main contribution of this paper is to uncover a behavioral mechanism implemented by banks in the Euro unsecured money market. According to the relevant theoretical literature on OTC markets (Babus and Kondor; 2013), private information may have a relevant role in a decentralized market with heterogeneous valuations of the exchanged asset. A formal test for the presence and diffusion of private information is proposed using network econometrics. If it is at work, this mechanism has a direct role in defining the average market rates and their volatility, and an indirect one in determining debts at variable rates of households and firms, via the pass-through from market to banking rates. Along this way, the paper proposes also a new perspective from which studying the dynamics of money market and its turbulence.

The second contribution is empirical, we tested for private information diffusion in the Euro unsecured money market network detected by applying an augmented Furfine algorithm on Target2 payments data. Spatial econometrics techniques were adapted to a network framework in which arcs (loans) are considered as basic units instead of nodes (banks) and spillover effects in bargained prices are estimated. 2SLS estimation was proposed and computed for a wide time span from June 2008 to the end of 2012, estimates reveal that diffusion is not constantly at work during the period considered. It is relevant only during *hot periods*. This evidence indicates that market tensions and Sovereign crises let individual evaluations be dispersed and diffusion of private information take place, with banks paying an higher attention to signals coming from others. The estimated parameter, which captures private information diffusion, can be seen as a *multiplier* of price dispersion. Idiosyncratic shocks to bank's valuation (about central bank money market value) trigger propagation of deviance (from the signal rate) through the interbank network, resulting in an higher aggregate price dispersion. A robust estimator of this *multiplier* is proposed. Diffusion has been found to flow in multiple directions through the interbank network, lenders are influenced by the price they experience as borrowers and borrowers are influenced by the price they experience as lenders. Transmission cannot be evaluated robustly after ECB 2011 LTRO intervention, highlighting it as a right decision if

private information diffusion is not thought worthy in this market. EONIA and, more widely, public information provided by monetary institutions are designed for preventing asymmetric information and strong (or clustered) deviance from the signal rate. We found that during periods characterized by strong uncertainty, even on future central bank decisions, the role of private information becomes relevant. Deviance from public signal seems to take place and have a network nature driven by private signals that market participants send to each other. In a similar scenario the intervention of ECB through Open Market Operations was effective in avoiding a similar pattern evolving. The practical implication of this intervention was to provide banks with a large amount of collateralized liquidity, with the ECB acting as a intermediary.

As a minor contribution, the paper may be seen as an application of spatial econometrics which is concerned about spillover effects among arcs instead of nodes.

References

- Afonso, G., Kovner, A. and Schoar, A. (2011). Stressed, not frozen: The federal funds market in the financial crisis, *The Journal of Finance* **66**(4): 1109–1139.
- Alonzo, S., Masi, P. and Tresoldi, C. (1994). La riserva obbligatoria ei tassi di interesse: il comportamento delle banche, *Bancaria* .
- Angelini, P., Nobili, A. and Picillo, C. (2011). The interbank market after august 2007: what has changed, and why?, *Journal of Money, Credit and Banking* **43**(5): 923–958.
- Anselin, L. (1996). The moran scatterplot as an esda tool to assess local instability in spatial association, *Spatial analytical perspectives on GIS* **4**: 111–127.
- Arciero, L., Heijmans, R., Heuver, R., Massarenti, M., Picillo, C. and Vacirca, F. (2013). How to measure the unsecured money market? the eurosystem's implementation and validation using target2 data, *DNB Working Papers* 369.
- Armantier, O. and Copeland, A. (2012). Assessing the quality of furfine-based algorithms, *Federal Reserve Bank of New York staff report* **575**.
- Babus, A. and Kondor, P. (2013). Trading and information diffusion in over-the-counter markets, *Technical report*, Working paper.
- Bech, M. L. and Klee, E. (2011). The mechanics of a graceful exit: Interest on reserves and segmentation in the federal funds market, *Journal of Monetary Economics* **58**(5): 415–431.
- Bramoullé, Y., Djebbari, H. and Fortin, B. (2009). Identification of peer effects through social networks, *Journal of Econometrics* **150**: 41–55.
- Calvó-Armengol, A., Patacchini, E. and Zenou, Y. (2009). Peer effects and social networks in education, *The Review of Economic Studies* **76**(4): 1239–1267.
- Furfine, C. (1999). The microstructure of the federal funds market, *Financial Markets, Institutions & Instruments* **8**(5): 24–44.
- Gambacorta, L. (2008). How do banks set interest rates?, *European Economic Review* **52**(5): 792–819.
- Graham, B. S. (2008). Identifying social interactions through conditional variance restrictions, *Econometrica* **76**(3): 643–660.
- Grossman, S. J. (1981). An introduction to the theory of rational expectations under asymmetric information, *The Review of Economic Studies* pp. 541–559.
- Grossman, S. J. and Stiglitz, J. E. (1980). On the impossibility of informationally efficient markets, *The American economic review* pp. 393–408.
- Hamilton, J. D. (1996). The daily market for federal funds, *Journal of Political Economy* **104**(1): 26–56.

- Hayek, F. A. (1945). The use of knowledge in society, *The American economic review* pp. 519–530.
- Ho, T. S. and Saunders, A. (1981). The determinants of bank interest margins: theory and empirical evidence, *Journal of Financial and Quantitative Analysis* **16**(04): 581–600.
- Kelejian, H. and Prucha, I. R. (1998). A generalized spatial two-stage least squares procedure for estimating a spatial autoregressive model with autoregressive disturbances, *The Journal of Real Estate Finance and Economics* **17**(1): 99–121.
- Kelejian, H. and Prucha, I. R. (1999). A generalized moments estimator for the autoregressive parameter in a spatial model, *International economic review* **40**(2): 509–533.
- Kelejian, H. and Prucha, I. R. (2004). Estimation of simultaneous systems of spatially inter-related cross sectional equations, *Journal of Econometrics* **118**(1): 27–50.
- Lee, L. F. (2004). Asymptotic distributions of quasi-maximum likelihood estimators for spatial autoregressive models, *Econometrica* **72**(6): 1899–1925.
- Lee, L. F. (2007). Identification and estimation of econometric models with group interactions, contextual factors and fixed effects, *Journal of Econometrics* **140**: 333–374.
- Lee, L. F., Liu, X. and Lin, X. (2010). Specification and estimation of social interaction models with network structures, *The Econometrics Journal* **13**: 145–176.
- Liu, X. and Lee, L. F. (2010). Gmm estimation of social interaction models with centrality, *Journal of Econometrics* **159**: 99–115.
- Martinez, C. and Leon, C. (2014). The Cost of Collateralized Borrowing in the Colombian Money Market: Does Connectedness Matter?, *Borradores de Economía* 803, Banco de la Republica de Colombia.
- Moran, P. A. P. (1950). Notes on continuous stochastic phenomena, *Biometrika* **37**(1/2): 17–23.
- Muth, J. F. (1961). Rational expectations and the theory of price movements, *Econometrica* pp. 315–335.
- Nerlove, M. (1958). Adaptive expectations and cobweb phenomena, *The Quarterly Journal of Economics* **72**(2): 227–240.
- Pesaran, M. H. and Smith, R. J. (1994). A generalized r^2 criterion for regression models estimated by the instrumental variables method, *Econometrica* **62**(3): 705–10.
- Prati, A., Bartolini, L. and Bertola, G. (2003). The overnight interbank market: Evidence from the g-7 and the euro zone, *Journal of banking & finance* **27**(10): 2045–2083.
- Shiller, R. J. and McCulloch, J. H. (1987). The term structure of interest rates, *National Bureau of Economic Research Cambridge, Mass., USA*.
- Wolinsky, A. (1990). Information revelation in a market with pairwise meetings, *Econometrica* **58**(1): 1–23.